



Telecab

RESIDENTIAL ELEVATOR

Planning Guide

Applicable Codes:

ASME A17.1/CSA-B44

Safety Code for Elevators and Escalators
Section 5.3 – Private Residential Elevators

Part No. 000698
06-m04-2010

Copyright © 2010
Savaria Corporation
All rights reserved.

Printed in Canada

Purpose of This Guide

This guide assists architects, contractors, and lift professionals to incorporate the Telecab Residential Elevator into a residential building design. The design and manufacture of the Telecab Residential Elevator meets the requirements of the ASME A17.1/CSA B44 – Safety Code for Elevators – specifically Section 5.3, Private Residence Elevators.

We recommend that you contact your local authority having jurisdiction to ensure that you adhere to all local rules and regulations pertaining to residential elevators.

IMPORTANT: This Planning Guide provides nominal dimensions and specifications useful for the initial planning of a residential elevator project. Dimensions and specifications are subject to change without notice due to continually evolving code and product applications.

Before beginning actual construction, please consult Savaria Concord Lifts Inc. or the authorized Savaria Concord dealer in your area to ensure you receive your site-specific installation drawings with the dimensions and specifications for your project.

Visit our website for the most recent Telecab drawings and dimensions.

How to Use This Guide

- 1** Determine your client's intended use of the lift.
- 2** Determine the local code requirements.
- 3** Determine the site installation parameters.
- 4** Determine the cab type and hoistway size requirements.
- 5** Plan for electrical requirements.

History

December 11, 2009 – Initial release

April 6,, 2010 – Updated logo and typeface

Specifications

Telecab Specifications

| Specification | Specification Data |
|---|--|
| Load capacity | 500 lbs. (227 kg) |
| Maximum travel | 23 ft (7.0 m) maximum |
| Travel speed | 25 ft/min (0.13 m/s) standard |
| Tower | Modular 8 ft (2.4 m) guide rail assembly with roller guide shoes |
| Control system | 115 VAC relay logic operation 115 VAC up direction and 12 VDC down direction |
| Levels serviced | 2 levels (3 optional) |
| Platform | Non-skid platform |
| Power supply (circuit supplied by others) | 110 VAC, 20 A, 60 Hz, single phase |
| Lighting supply (circuit supplied by others) | 120 volt, 60 Hz, single phase |
| Motor/pump | 110 VAC, 1.5 HP screw type |
| Electrical | Automatic battery recharging system (115 VAC) Low voltage controls |
| Drive system | 2:1 roller chain hydraulic |
| Temperature operating range | -10 °C to +40 °C (14 °F to 104 °F) |
| Cab access | Front access only (standard) Left or right access (optional); with optional 2-door access |
| Cab dimensions | Standard: W30" x L46" x H78" (762 mm x 1168 mm x 1981 mm) Optional: W32" x L53" x H78" (813 mm x 1346 mm x 1981 mm) Optional: W30" x L47" x H78" (762 mm x 1194 mm x 1981 mm) Optional: W32" x L54" x H78" (813 mm x 1372 mm x 1981 mm) |
| Door size | H78" x W30" steel with plexiglass insert |
| Minimum overhead clearance | 90" (2286 mm) at top landing |
| Hall calls | Continuous pressure directional push buttons Keyed call/send |
| Color and finish | Beige or white electrostatic powder coat Clear or bronze acrylic windows |
| Safety features | Adjustable top floor presence detector built into the cab Electromechanical door lock and open door sensor Underpan safety sensor Emergency stop and alarm Emergency battery lowering Manual emergency lowering Fully-enclosed drive tower Pressure relief valve to prevent platform overload Slack chain safety device Two halogen lights in cab Telephone in cab |
| Optional equipment | Battery operation in up and down directions Two door concept (left/right access) Custom cab size (without ABS vacuum formed plastic finish) Custom color Horizontal plastic panel on hinged side Wired remote control in cab Hydraulic door closer Automatic door operator (without ABS vacuum formed plastic finish) |

Site Construction Details

The Telecab needs a wall that supports a minimum of 700 lb (3114 N) of pull-out force at any bracket. The floor must be capable of supporting a load of 3200 lb (14.2 kN). See Figure 1.

A support wall with a combination of either two columns of three 2x4's, two columns of two 2x4's and two 2x6's, or a concrete or brick wall is required. Figure 2 shows the support wall configuration

Figure 1: Wall/floor loading

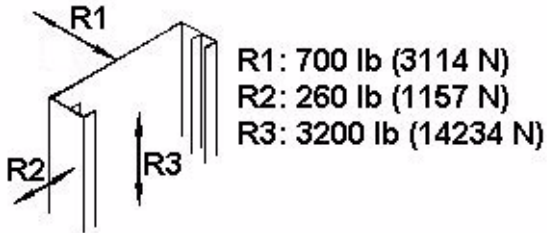
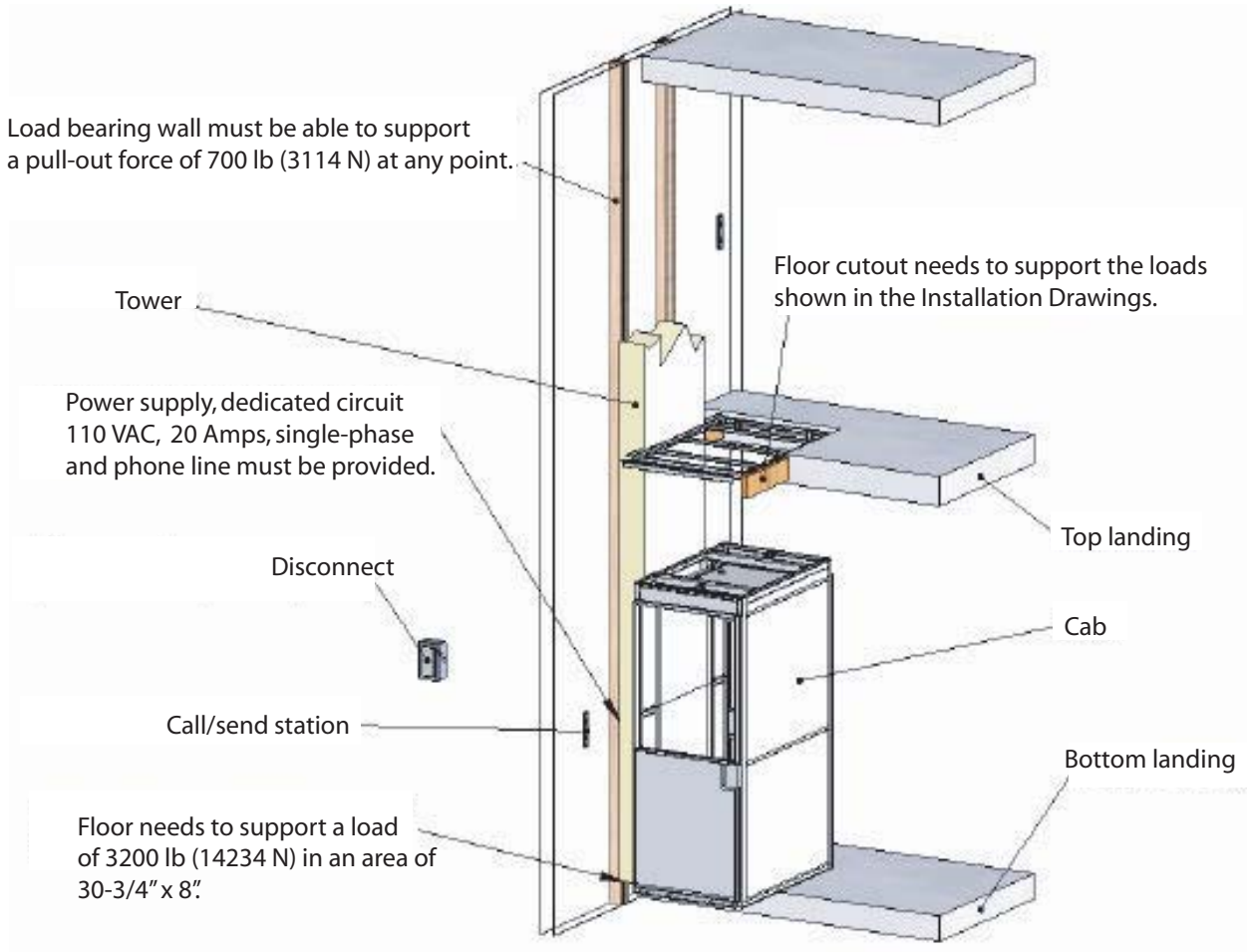
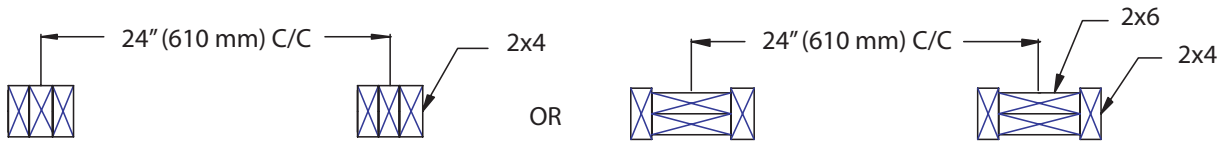


Figure 2: Support wall configuration

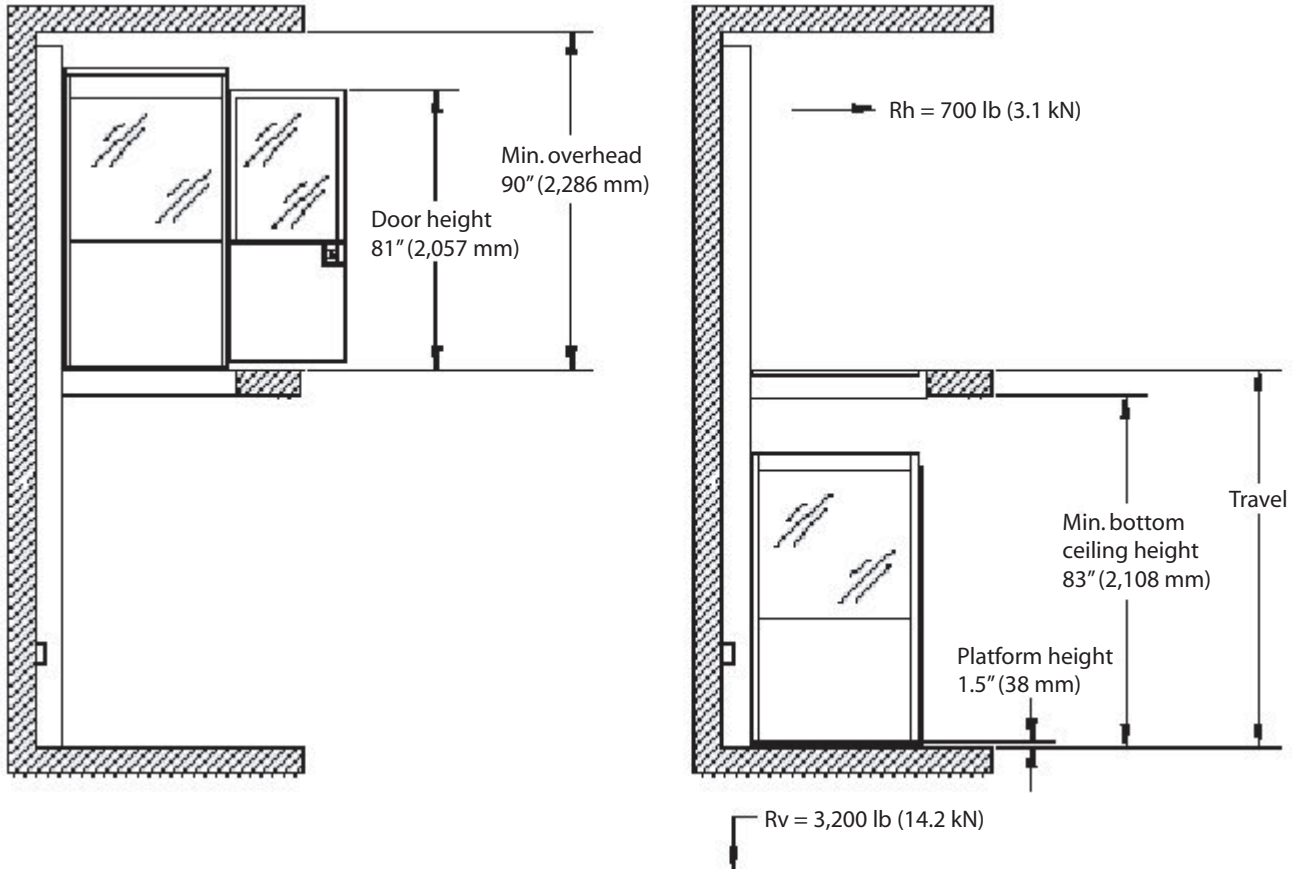


Elevation View

The following illustration shows the general elevation view and dimensions of the Telecab. Note that the minimum overhead is 90" for a 78" inside height cab dimension.

Refer to your site-specific Installation Drawings for details relevant to your job site.

Figure 3: Elevation view and dimensions



Cab Types

There are four types of cab sizes. Type I is the standard size; Types II, III, and IV are optional.

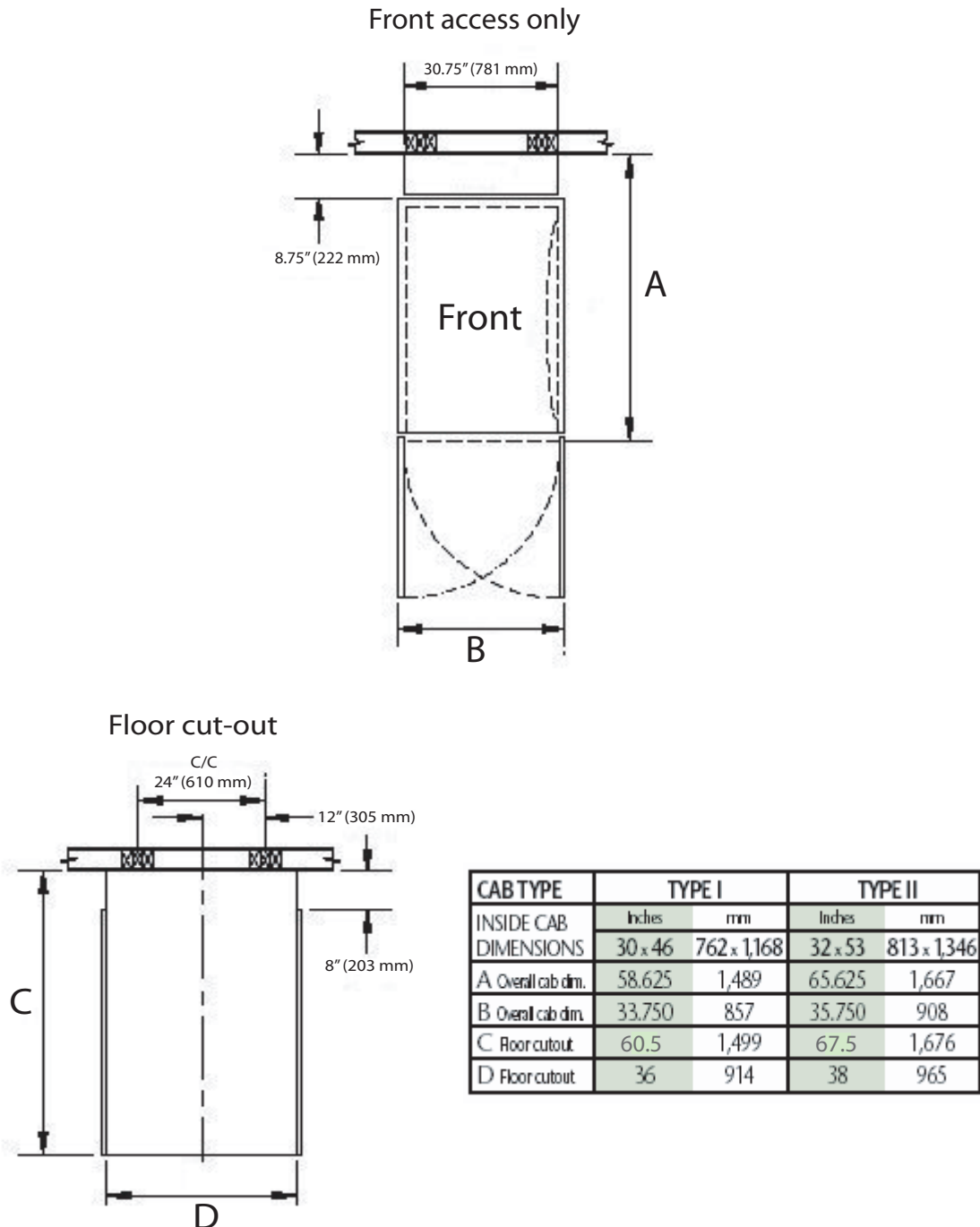
- Type I – 30" x 46", front access only (standard)
- Type II – 32" x 53", front access only (optional)
- Type III – 30" x 47", left or right access (optional)
- Type IV – 32" x 54", left or right access (optional)

Note: Types III and IV offer left or right access, with an optional two-door configuration.

Type I and II Cabs

For type I and type II cabs, access is available from the front only. Refer to your site-specific Installation Drawings for details relevant to your job site.

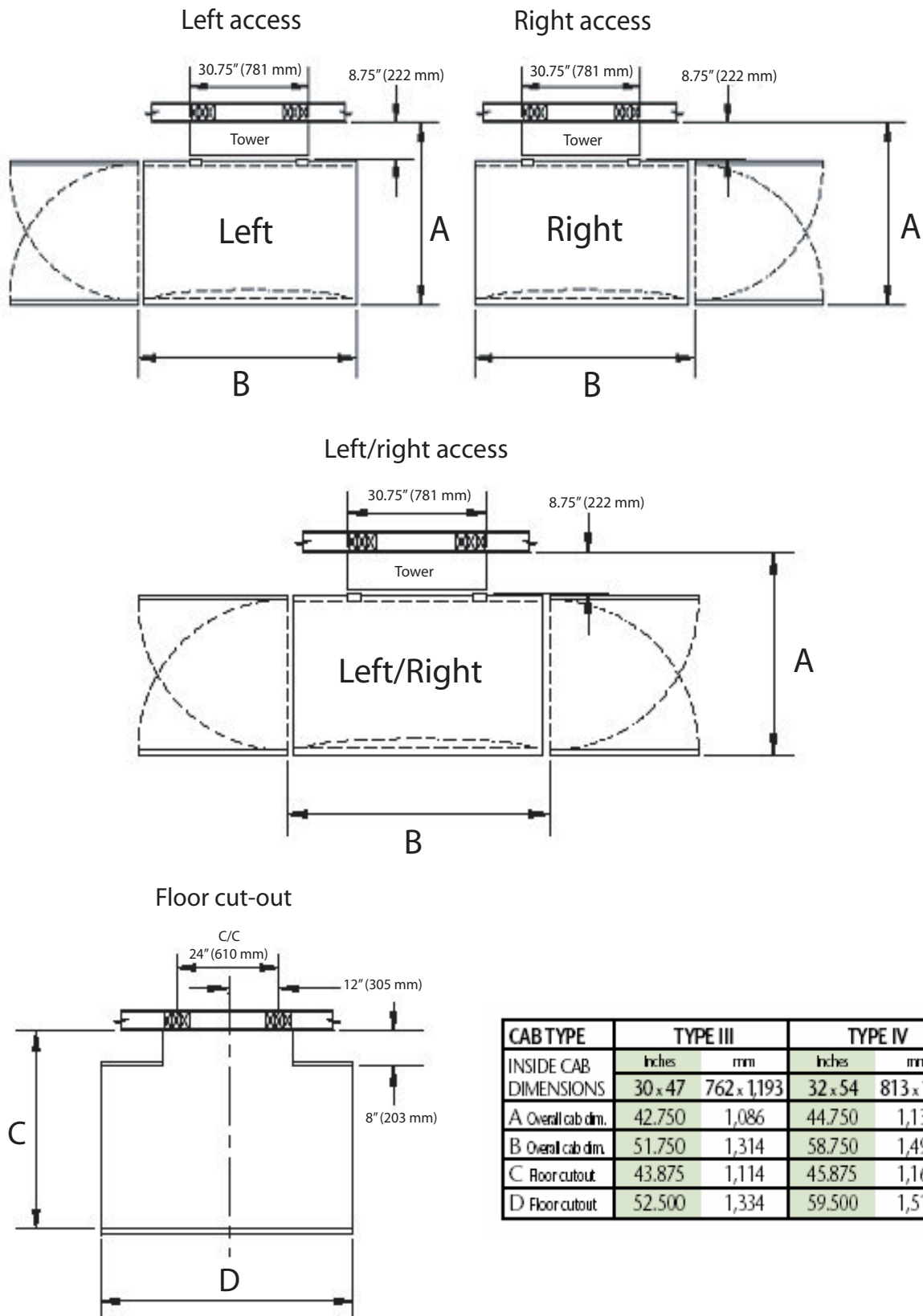
Figure 4: Type I and II – front access only



Type III and IV Cabs

For type III and type IV cabs, access is available from the left, right, or left *and* right. Note that “left/right” may also be referred to as “front/back”. Refer to your site-specific Installation Drawings for details relevant to your job site.

Figure 5: Type III and IV – left and/or right access



| CAB TYPE | TYPE III | | TYPE IV | |
|-----------------------|----------|-------------|---------|-------------|
| | Inches | mm | Inches | mm |
| INSIDE CAB DIMENSIONS | 30 x 47 | 762 x 1,193 | 32 x 54 | 813 x 1,372 |
| A Overall cab dim. | 42.750 | 1,086 | 44.750 | 1,137 |
| B Overall cab dim. | 51.750 | 1,314 | 58.750 | 1,492 |
| C Floor cutout | 43.875 | 1,114 | 45.875 | 1,165 |
| D Floor cutout | 52.500 | 1,334 | 59.500 | 1,511 |

Drawings

The next several pages provide plan view, elevation and floor cut-out drawings for the Traditional Telecab. Note that there is a similar set of plan drawings for the Premium Telecab (not shown here).

- Type I front access only, 30" x 46", plan and elevation views
- Type I front access only, 30" x 46", floor cut-out
- Type II front access only, 32" x 53", plan and elevation views
- Type II front access only, 32" x 53", floor cut-out
- Type III left access, 30" x 47", plan and elevation views
- Type III left access, 30" x 47", floor cut-out
- Type III right access, 30" x 47", plan and elevation views
- Type III right access, 30" x 47", floor cut-out
- Type III left/right access, 30" x 47", plan and elevation views
- Type III left/right access, 30" x 47", floor cut-out
- Type IV left access, 32" x 54", plan and elevation views
- Type IV left access, 32" x 54", floor cut-out
- Type IV right access, 32" x 54", plan and elevation views
- Type IV right access, 32" x 54", floor cut-out
- Type IV left/right access, 32" x 54", plan and elevation views
- Type IV left/right access, 32" x 54", floor cut-out

Figure 6: Plan and elevation views – Type I front access only, 30" x 46"

DRAWING APPROVAL:
THIS DRAWING REFLECTS OUR INTERPRETATION OF THE INFORMATION PROVIDED BY THE DEALER ON THE TELECAB ORDER FORM. THIS INFORMATION IS THE DEALER'S RESPONSIBILITY, AND IS THE BASIS FROM WHICH THE TELECAB ELEVATOR IS DESIGNED AND MANUFACTURED. PLEASE INDICATE THE REQUESTED ACTION BY CHECKING ONE OF THE FOLLOWING BOXES AND SIGNING BELOW TO AUTHORIZE COMPLETION OF THIS ORDER.

APPROVED WITH NO EXCEPTIONS
MANUFACTURE ELEVATOR AS PER DRAWING

CHANGE AS NOTED, REAPPROVAL REQUIRED
MAKE CHANGES AS NOTED, SEND CORRECTED DRAWING FOR REAPPROVAL BEFORE MANUFACTURE

SIGNATURE: _____ DATE: _____

CAUTION: ONCE THE DRAWING IS APPROVED, JOB CANCELLATION FEES WILL BE 50% OF JOB PRICING

PROVIDED BY OTHERS

- 1) POWER SUPPLY: 120 VAC, 16 AMPS, SINGLE PHASE
- 2) CONSTRUCTION SITE: LOAD BEARING WALL AND FLOOR CUT OUT NEEDS TO SUPPORT THE LOADS SHOWN ON THE DRAWINGS. THE SOLIDITY OF THE CONSTRUCTION IS NOT THE RESPONSIBILITY OF SAVARIA INC. LOAD BEARING WALL TO INCLUDE TWO SETS OF THREE 2" X 4" WOOD STUDS 24" APART AS SHOWN ON THE FLOOR CUT-OUT DRAWING
- 3) DIMENSIONS: CONTRACTOR/CUSTOMER TO VERIFY ALL DIMENSIONS AND REPORT ANY DISCREPANCIES TO OUR OFFICE IMMEDIATELY.
- 4) PERMANENT POWER: BEFORE INSTALLATION CAN BEGIN, PERMANENT POWER MUST BE SUPPLIED.
- 5) A PHONE LINE TO CONNECT THE CAB PHONE.

SAFETY FEATURES

- 1) ELECTRO-MECHANICAL DOOR LOCK AND OPEN DOOR SENSOR
- 2) UNDER PANEL SAFETY SENSOR
- 3) EMERGENCY STOP AND ALARM
- 4) EMERGENCY BATTERY LOWERING
- 5) EMERGENCY LOWERING
- 6) FULLY ENCLOSED DRIVE TOWER
- 7) PRESSURE RELIEF VALVE TO PREVENT PLATFORM OVERLOAD
- 8) SLACK CHAIN SAFETY DEVICE
- 9) TELEPHONE IN CAB
- 10) HALOGEN LIGHT IN CAB
- 11) NEGATIVE PRESSURE SWITCH

CODE
THIS LIFT IS DESIGNED, MANUFACTURED AND INSTALLED IN ACCORDANCE WITH THE FOLLOWING STANDARDS :
ASME A17.1 PART V 1998-97, NEC 2002 AND IBC 2000.
SAVARIA'S RESPONSIBILITY IS LIMITED TO THE DESIGN AND MANUFACTURING REQUIREMENTS OF THESE CODES AND EXCLUDES REQUIREMENTS RELEVANT TO THE INSTALLATION AND INSTALLATION SITE.

| | |
|-------------------------|---|
| CLASSIFICATION | RESIDENTIAL BUILDING |
| TELECAB TYPE | TYPE I TRADITIONAL |
| TELECAB USABLE DIM. | 30" x 46" x 78" |
| TELECAB CAPACITY | 500 LBS [227 KG] |
| COLOR (URETHANE FINISH) | <input type="checkbox"/> WHITE <input type="checkbox"/> BEIGE |
| PLEXIGLASS TINT | <input type="checkbox"/> BRONZE <input type="checkbox"/> CLEAR |
| RATED SPEED | <input type="checkbox"/> 20 FT/MIN <input type="checkbox"/> 14 FT/MIN |
| LEVEL SERVED | <input type="checkbox"/> 2 LEVELS <input type="checkbox"/> 3 LEVELS |
| NUMBER OF OPENING(S) | <input type="checkbox"/> 1 OPENING <input type="checkbox"/> 3 OPENINGS |
| DRIVE SYSTEM | 1 TO 2 CHAIN HYDRAULIC |
| CAB DOOR OPERATION | <input type="checkbox"/> MANUAL <input type="checkbox"/> HYDRAULIC DOOR CLOSER <input type="checkbox"/> POWER OPERATED |
| PLUNGER DIAMETER | <input type="checkbox"/> 1 1/2" <input type="checkbox"/> 2" |
| PLUNGER WALL THK. | FULL |
| CASING DIAMETER | <input type="checkbox"/> 2" <input type="checkbox"/> 2 1/2" |
| CASING WALL THK. | 1/8" |
| CYLINDER CLOSE LENGTH | 80 1/2" |
| WEIGHT/PLUNGER | 2125 LBS [964 KG] |
| SYSTEM MAX. PRESSURE | 3000 PS |
| OIL CAPACITY | <input type="checkbox"/> 1.25 GAL/US <input type="checkbox"/> 5.00 GAL/US |
| MOTOR | 1.8 HP, 115 V |
| CHAIN | #50, QTY: 2 |
| CONTROLLER | RELAY LOGIC |
| POWER OPERATION | <input type="checkbox"/> 110 VAC + 12 VDC DOWN STD <input type="checkbox"/> 12 VDC UP + DOWN <input type="checkbox"/> 220 VAC/50 HZ |
| OPERATION | CONSTANT PRESSURE, ANTI-CREEP FEATURE |
| HALL STATION | <input type="checkbox"/> SURFACE MOUNTED <input type="checkbox"/> RECESS MOUNTED |
| BEARING WALL | <input type="checkbox"/> WOOD <input type="checkbox"/> CONCRETE <input type="checkbox"/> OTHER: _____ |
| FLOOR PLUG | <input type="checkbox"/> REQUIRED <input type="checkbox"/> NOT REQUIRED |
| UNDER PAN | <input type="checkbox"/> REQUIRED <input type="checkbox"/> NOT REQUIRED |

TRADITIONAL TELECAB

DRAWING APPROVAL:
THIS DRAWING REFLECTS OUR INTERPRETATION OF THE INFORMATION PROVIDED BY THE DEALER ON THE TELECAB ORDER FORM. THIS INFORMATION IS THE DEALER'S RESPONSIBILITY, AND IS THE BASIS FROM WHICH THE TELECAB ELEVATOR IS DESIGNED AND MANUFACTURED. PLEASE INDICATE THE REQUESTED ACTION BY CHECKING ONE OF THE FOLLOWING BOXES AND SIGNING BELOW TO AUTHORIZE COMPLETION OF THIS ORDER.

APPROVED WITH NO EXCEPTIONS
MANUFACTURE ELEVATOR AS PER DRAWING

CHANGE AS NOTED, REAPPROVAL REQUIRED
MAKE CHANGES AS NOTED, SEND CORRECTED DRAWING FOR REAPPROVAL BEFORE MANUFACTURE

SIGNATURE: _____ DATE: _____

CAUTION: ONCE THE DRAWING IS APPROVED, JOB CANCELLATION FEES WILL BE 50% OF JOB PRICING

DRAWING APPROVAL:
THIS DRAWING REFLECTS OUR INTERPRETATION OF THE INFORMATION PROVIDED BY THE DEALER ON THE TELECAB ORDER FORM. THIS INFORMATION IS THE DEALER'S RESPONSIBILITY, AND IS THE BASIS FROM WHICH THE TELECAB ELEVATOR IS DESIGNED AND MANUFACTURED. PLEASE INDICATE THE REQUESTED ACTION BY CHECKING ONE OF THE FOLLOWING BOXES AND SIGNING BELOW TO AUTHORIZE COMPLETION OF THIS ORDER.

APPROVED WITH NO EXCEPTIONS
MANUFACTURE ELEVATOR AS PER DRAWING

CHANGE AS NOTED, REAPPROVAL REQUIRED
MAKE CHANGES AS NOTED, SEND CORRECTED DRAWING FOR REAPPROVAL BEFORE MANUFACTURE

SIGNATURE: _____ DATE: _____

CAUTION: ONCE THE DRAWING IS APPROVED, JOB CANCELLATION FEES WILL BE 50% OF JOB PRICING

TRADITIONAL TELECAB

CAB CONTROL

HALL STATION (1st FLOOR) HALL STATION (2nd FLOOR)

Figure 7: Floor cut-out – Type I front access only, 30" x 46"

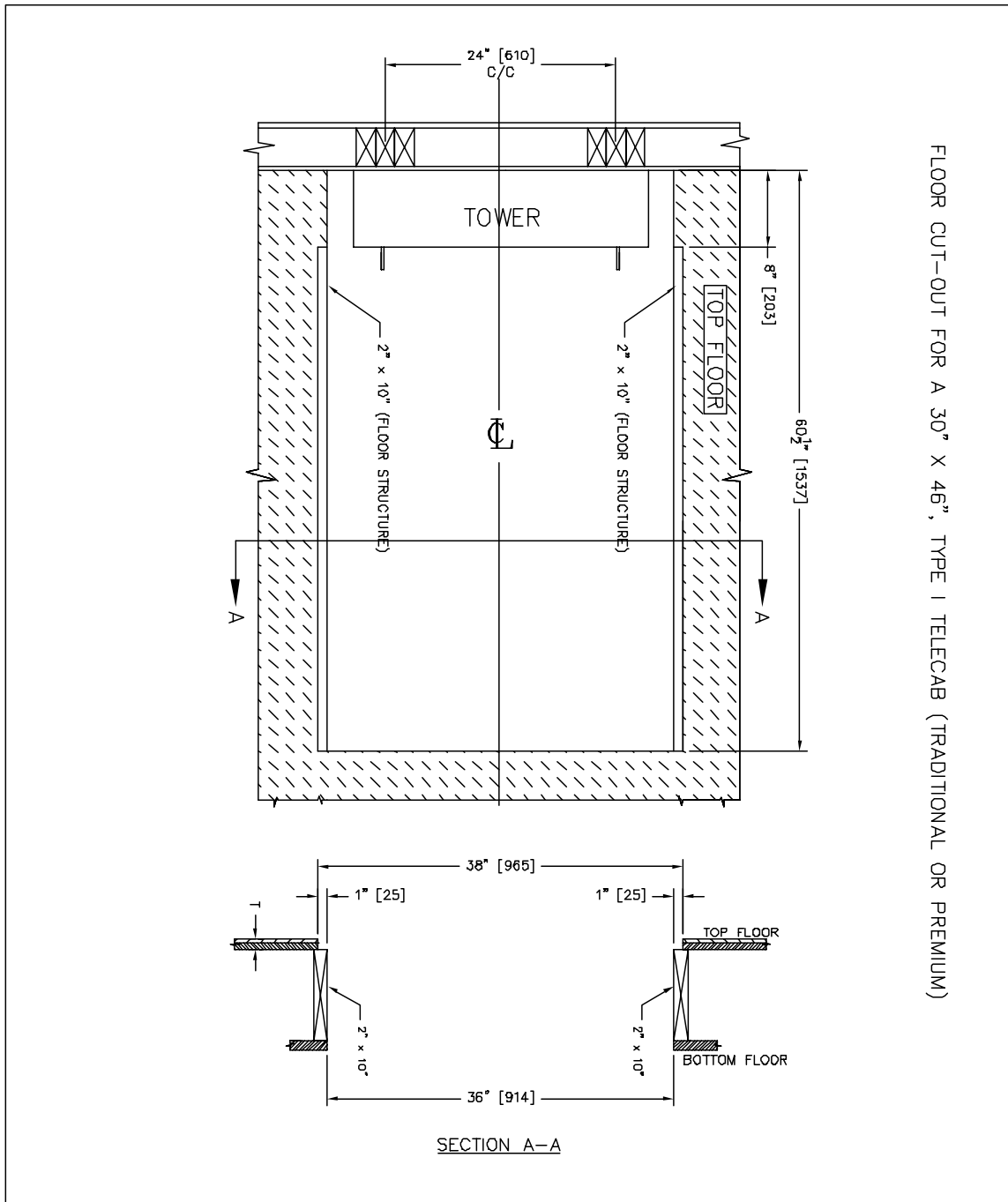


Figure 8: Plan and elevation views – Type II front access only, 32" x 53"

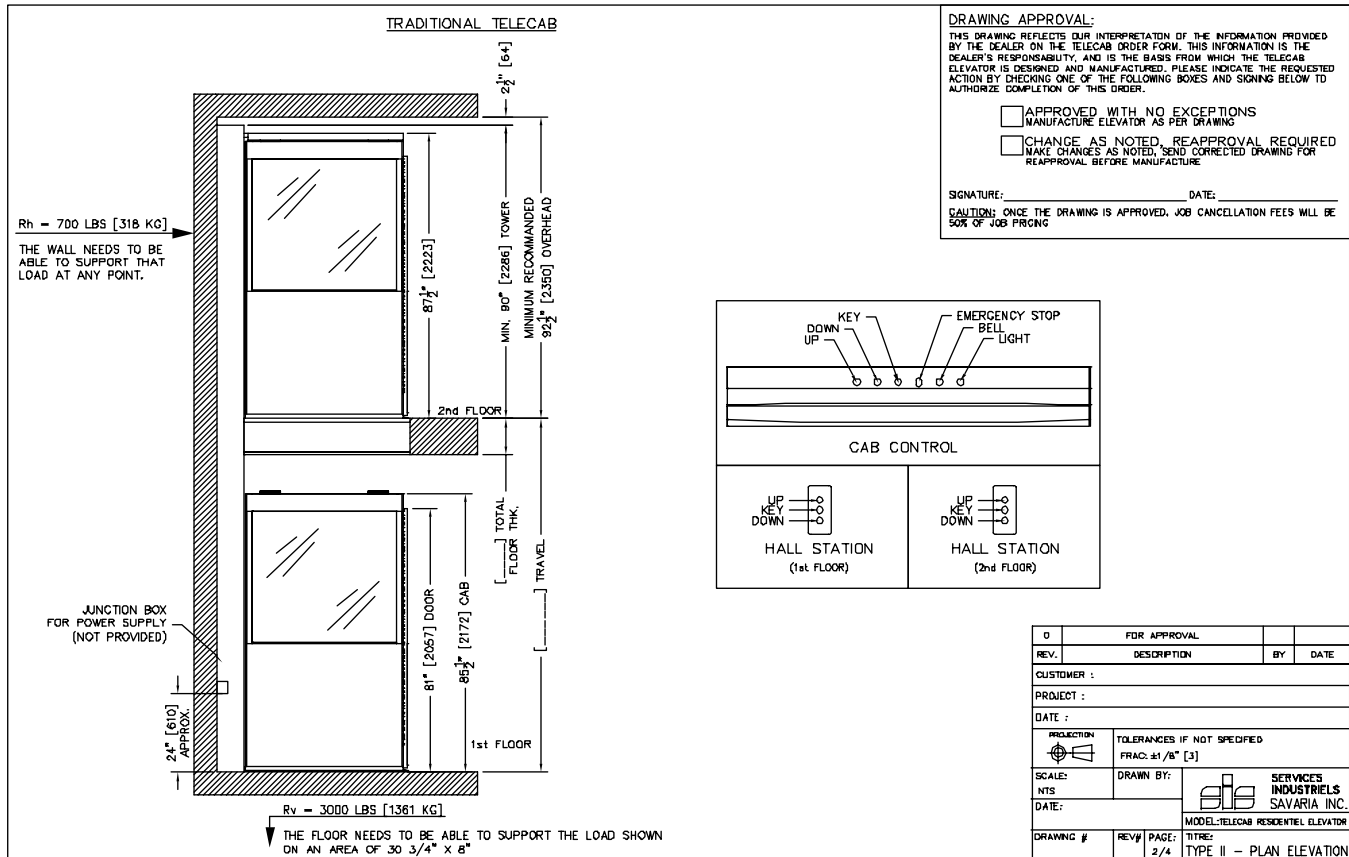
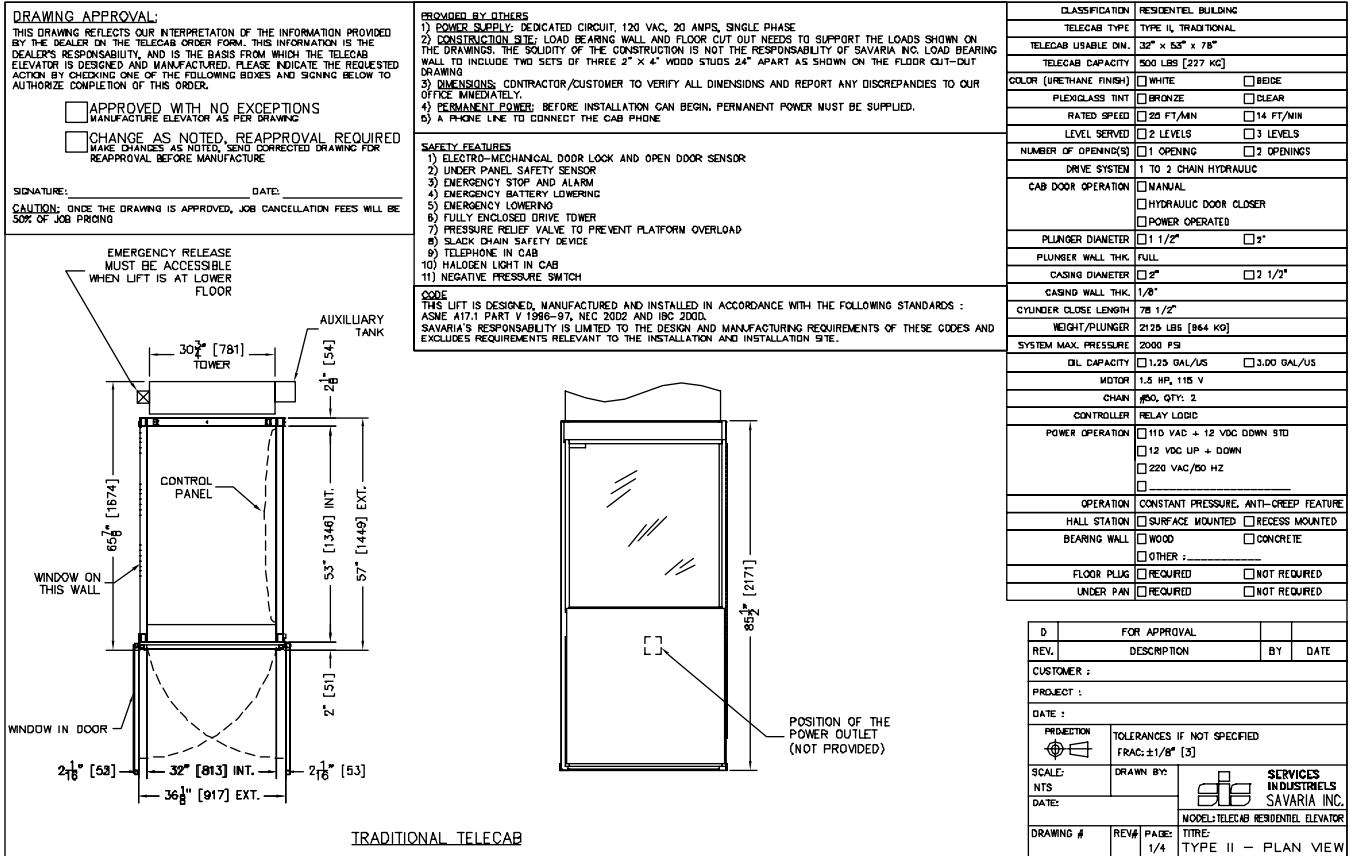


Figure 9: Floor cut-out – Type II front access only, 32" x 53"

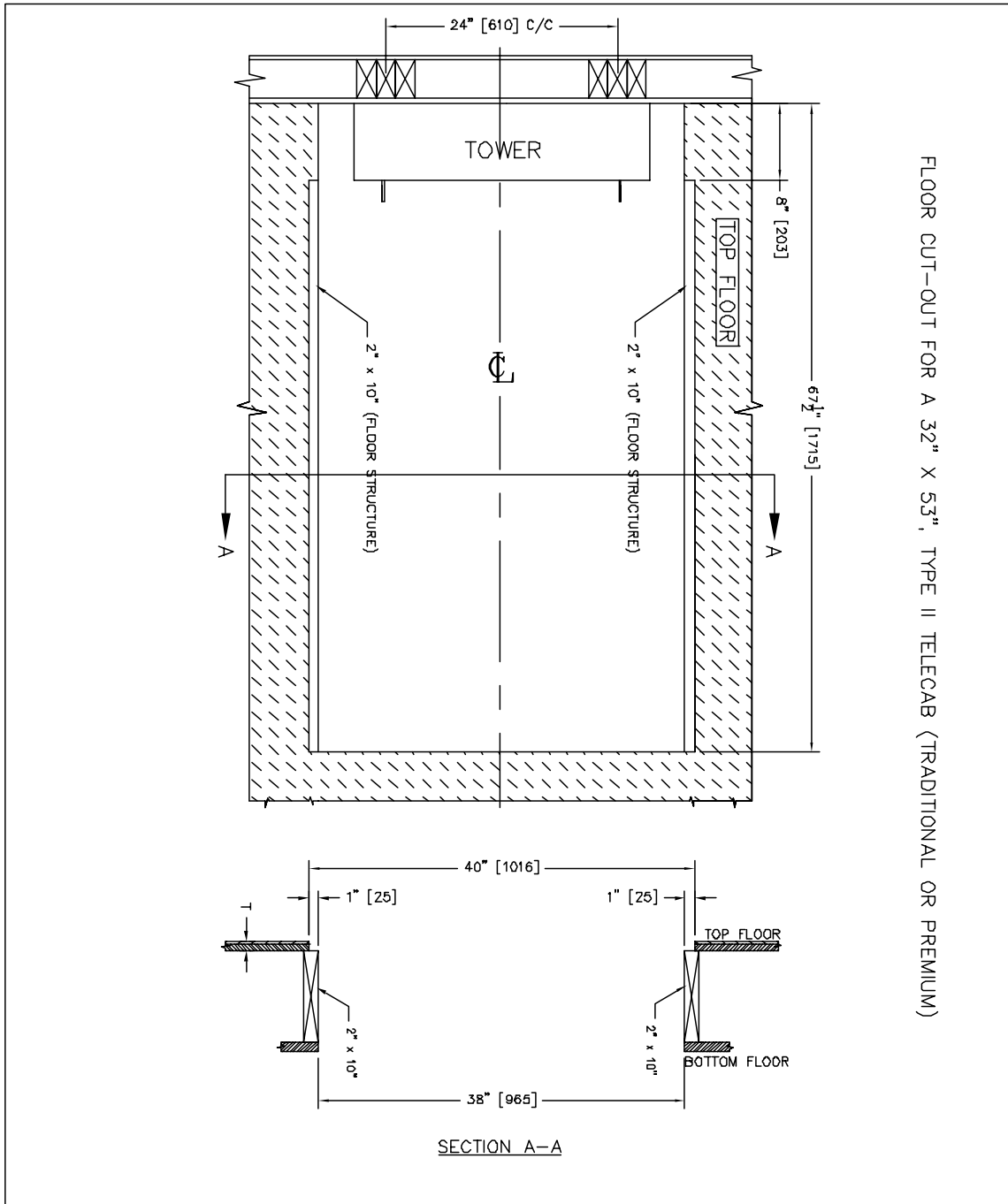


Figure 10: Plan and elevation views – Type III left access, 30" x 47"

DRAWING APPROVAL:
THIS DRAWING REFLECTS OUR INTERPRETATION OF THE INFORMATION PROVIDED BY THE DEALER ON THE TELECAB ORDER FORM. THIS INFORMATION IS THE DEALER'S RESPONSIBILITY, AND IS THE BASIS FROM WHICH THE TELECAB ELEVATOR IS DESIGNED AND MANUFACTURED. PLEASE INDICATE THE REQUESTED ACTION BY CHECKING ONE OF THE FOLLOWING BOXES AND SIGNING BELOW TO AUTHORIZE COMPLETION OF THIS ORDER.

APPROVED WITH NO EXCEPTIONS
(MANUFACTURE ELEVATOR AS PER DRAWING)

CHANGE AS NOTED, REAPPROVAL REQUIRED
(MAKE CHANGES AS NOTED, SEND CORRECTED DRAWING FOR REAPPROVAL BEFORE MANUFACTURE)

SIGNATURE: _____ DATE: _____

CAUTION: ONCE THE DRAWING IS APPROVED, JOB CANCELLATION FEES WILL BE 50% OF JOB PRICING

PROVIDED BY OTHERS

- 1) ELECTRO-MECHANICAL DOOR LOCK AND OPEN DOOR SENSOR
- 2) CONSTRUCTION SITE: LOAD BEARING WALL AND FLOOR CUT OUT NEEDS TO SUPPORT THE LOADS SHOWN ON THE DRAWINGS. THE SOLIDITY OF THE CONSTRUCTION IS NOT THE RESPONSIBILITY OF SAVARIA INC. LOAD BEARING WALL TO INCLUDE TWO SETS OF THREE 2" X 4" WOOD STUDS 24" APART AS SHOWN ON THE FLOOR CUT-OUT DRAWING
- 3) DIMENSIONS: CONTRACTOR/CUSTOMER TO VERIFY ALL DIMENSIONS AND REPORT ANY DISCREPANCIES TO OUR OFFICE IMMEDIATELY.
- 4) PERMANENT POWER: BEFORE INSTALLATION CAN BEGIN, PERMANENT POWER MUST BE SUPPLIED.
- 5) A PHONE LINE TO CONNECT THE CAB PHONE

SAFETY FEATURES

- 1) UNDER PANEL SAFETY SENSOR
- 2) EMERGENCY STOP AND ALARM
- 3) EMERGENCY BATTERY LOWERING
- 4) EMERGENCY LOWERING
- 5) FULLY ENCLOSED DRIVE TOWER
- 6) PRESSURE RELIEF VALVE TO PREVENT PLATFORM OVERLOAD
- 7) SLACK CHAIN SAFETY DEVICE
- 8) TELEPHONE IN CAB
- 9) HALOGEN LIGHT IN CAB
- 10) NEGATIVE PRESSURE SWITCH

CODE
THIS LIFT IS DESIGNED, MANUFACTURED AND INSTALLED IN ACCORDANCE WITH THE FOLLOWING STANDARDS :
ASME A17.1 PART V 1986-97, NEC 2002 AND ISB 2000.
SAVARIA'S RESPONSIBILITY IS LIMITED TO THE DESIGN AND MANUFACTURING REQUIREMENTS OF THESE CODES AND EXCLUDES REQUIREMENTS RELEVANT TO THE INSTALLATION AND INSTALLATION SITE.

CLASSIFICATION RESIDENTIAL BUILDING

TELECAB TYPE TYPE III, TRADITIONAL

TELECAB USABLE DIM. 30" X 47" X 78"

TELECAB CAPACITY 500 LBS [227 KG]

COLOR (URETHANE FINISH) WHITE BEIGE

PLEXIGLASS TINT BRONZE CLEAR

RATED SPEED 20 FT/MIN 14 FT/MIN

LEVEL SERVED 2 LEVELS 3 LEVELS

NUMBER OF OPENING(S) 1 OPENING 2 OPENINGS

DRIVE SYSTEM 1 TO 2 CHAIN HYDRAULIC

CAB DOOR OPERATION MANUAL HYDRAULIC DOOR CLOSER POWER OPERATED

PLUNGER DIAMETER 1 1/2" 2"

PLUNGER WALL THK. FULL

CASING DIAMETER 2" 2 1/2"

CASING WALL THK. 1/8"

CYLINDER CLOSE LENGTH 78 1/2"

WEIGHT/PLUNGER 2125 LBS [864 KG]

SYSTEM MAX. PRESSURE 2000 PSI

Oil Capacity 1.25 GAL/US 3.00 GAL/US

MOTOR 1.5 HP, 115 V

CHAIN #60, QTY: 2

CONTROLLER RELAY LOGIC

POWER OPERATION 110 VAC + 12 VDC DOWN STD 12 VDC UP + DOWN 220 VAC/60 HZ

OPERATION CONSTANT PRESSURE, ANTI-CREEP FEATURE

HALL STATION SURFACE MOUNTED RECESS MOUNTED

BEARING WALL WOOD CONCRETE OTHER: _____

FLOOR PLUG REQUIRED NOT REQUIRED

UNDER PAN REQUIRED NOT REQUIRED

TRADITIONAL TELECAB

| | | | |
|------------|--|---|-----------------------------|
| D | FOR APPROVAL | | |
| REV. | DESCRIPTION | BY | DATE |
| CUSTOMER : | | | |
| PROJECT : | | | |
| DATE : | | | |
| PROJECTION | TOLERANCES IF NOT SPECIFIED FRAC: ±1/8" [3] | | |
| SCALE: | DRAWN BY: | SERVICES INDUSTRIELS SAVARIA INC. MODEL: TELECAB RESIDENTIAL ELEVATOR | |
| NTS | | | |
| DATE: | | | |
| DRAWING # | REV: 0 | PAGE: 1/4 | TITLE: TYPE III - PLAN VIEW |

DRAWING APPROVAL:
THIS DRAWING REFLECTS OUR INTERPRETATION OF THE INFORMATION PROVIDED BY THE DEALER ON THE TELECAB ORDER FORM. THIS INFORMATION IS THE DEALER'S RESPONSIBILITY, AND IS THE BASIS FROM WHICH THE TELECAB ELEVATOR IS DESIGNED AND MANUFACTURED. PLEASE INDICATE THE REQUESTED ACTION BY CHECKING ONE OF THE FOLLOWING BOXES AND SIGNING BELOW TO AUTHORIZE COMPLETION OF THIS ORDER.

APPROVED WITH NO EXCEPTIONS
(MANUFACTURE ELEVATOR AS PER DRAWING)

CHANGE AS NOTED, REAPPROVAL REQUIRED
(MAKE CHANGES AS NOTED, SEND CORRECTED DRAWING FOR REAPPROVAL BEFORE MANUFACTURE)

SIGNATURE: _____ DATE: _____

CAUTION: ONCE THE DRAWING IS APPROVED, JOB CANCELLATION FEES WILL BE 50% OF JOB PRICING

PROVIDED BY OTHERS

- 1) ELECTRO-MECHANICAL DOOR LOCK AND OPEN DOOR SENSOR
- 2) CONSTRUCTION SITE: LOAD BEARING WALL AND FLOOR CUT OUT NEEDS TO SUPPORT THE LOADS SHOWN ON THE DRAWINGS. THE SOLIDITY OF THE CONSTRUCTION IS NOT THE RESPONSIBILITY OF SAVARIA INC. LOAD BEARING WALL TO INCLUDE TWO SETS OF THREE 2" X 4" WOOD STUDS 24" APART AS SHOWN ON THE FLOOR CUT-OUT DRAWING
- 3) DIMENSIONS: CONTRACTOR/CUSTOMER TO VERIFY ALL DIMENSIONS AND REPORT ANY DISCREPANCIES TO OUR OFFICE IMMEDIATELY.
- 4) PERMANENT POWER: BEFORE INSTALLATION CAN BEGIN, PERMANENT POWER MUST BE SUPPLIED.
- 5) A PHONE LINE TO CONNECT THE CAB PHONE

SAFETY FEATURES

- 1) UNDER PANEL SAFETY SENSOR
- 2) EMERGENCY STOP AND ALARM
- 3) EMERGENCY BATTERY LOWERING
- 4) EMERGENCY LOWERING
- 5) FULLY ENCLOSED DRIVE TOWER
- 6) PRESSURE RELIEF VALVE TO PREVENT PLATFORM OVERLOAD
- 7) SLACK CHAIN SAFETY DEVICE
- 8) TELEPHONE IN CAB
- 9) HALOGEN LIGHT IN CAB
- 10) NEGATIVE PRESSURE SWITCH

CODE
THIS LIFT IS DESIGNED, MANUFACTURED AND INSTALLED IN ACCORDANCE WITH THE FOLLOWING STANDARDS :
ASME A17.1 PART V 1986-97, NEC 2002 AND ISB 2000.
SAVARIA'S RESPONSIBILITY IS LIMITED TO THE DESIGN AND MANUFACTURING REQUIREMENTS OF THESE CODES AND EXCLUDES REQUIREMENTS RELEVANT TO THE INSTALLATION AND INSTALLATION SITE.

CLASSIFICATION RESIDENTIAL BUILDING

TELECAB TYPE TYPE III, TRADITIONAL

TELECAB USABLE DIM. 30" X 47" X 78"

TELECAB CAPACITY 500 LBS [227 KG]

COLOR (URETHANE FINISH) WHITE BEIGE

PLEXIGLASS TINT BRONZE CLEAR

RATED SPEED 20 FT/MIN 14 FT/MIN

LEVEL SERVED 2 LEVELS 3 LEVELS

NUMBER OF OPENING(S) 1 OPENING 2 OPENINGS

DRIVE SYSTEM 1 TO 2 CHAIN HYDRAULIC

CAB DOOR OPERATION MANUAL HYDRAULIC DOOR CLOSER POWER OPERATED

PLUNGER DIAMETER 1 1/2" 2"

PLUNGER WALL THK. FULL

CASING DIAMETER 2" 2 1/2"

CASING WALL THK. 1/8"

CYLINDER CLOSE LENGTH 78 1/2"

WEIGHT/PLUNGER 2125 LBS [864 KG]

SYSTEM MAX. PRESSURE 2000 PSI

Oil Capacity 1.25 GAL/US 3.00 GAL/US

MOTOR 1.5 HP, 115 V

CHAIN #60, QTY: 2

CONTROLLER RELAY LOGIC

POWER OPERATION 110 VAC + 12 VDC DOWN STD 12 VDC UP + DOWN 220 VAC/60 HZ

OPERATION CONSTANT PRESSURE, ANTI-CREEP FEATURE

HALL STATION SURFACE MOUNTED RECESS MOUNTED

BEARING WALL WOOD CONCRETE OTHER: _____

FLOOR PLUG REQUIRED NOT REQUIRED

UNDER PAN REQUIRED NOT REQUIRED

TRADITIONAL TELECAB

| | | | |
|------------|--|---|----------------------------------|
| D | FOR APPROVAL | | |
| REV. | DESCRIPTION | BY | DATE |
| CUSTOMER : | | | |
| PROJECT : | | | |
| DATE : | | | |
| PROJECTION | TOLERANCES IF NOT SPECIFIED FRAC: ±1/8" [3] | | |
| SCALE: | DRAWN BY: | SERVICES INDUSTRIELS SAVARIA INC. MODEL: TELECAB RESIDENTIAL ELEVATOR | |
| NTS | | | |
| DATE: | | | |
| DRAWING # | REV: 0 | PAGE: 2/4 | TITLE: TYPE III - PLAN ELEVATION |

Figure 12: Plan and elevation views – Type III right access, 30" x 47"

DRAWING APPROVAL:
 THIS DRAWING REFLECTS OUR INTERPRETATION OF THE INFORMATION PROVIDED BY THE DEALER ON THE TELECAB ORDER FORM. THIS INFORMATION IS THE DEALER'S RESPONSIBILITY, AND IS THE BASIS FROM WHICH THE TELECAB ELEVATOR IS DESIGNED AND MANUFACTURED. PLEASE INDICATE THE REQUESTED ACTION BY CHECKING ONE OF THE FOLLOWING BOXES AND SIGNING BELOW TO AUTHORIZE COMPLETION OF THIS ORDER.

APPROVED WITH NO EXCEPTIONS
 MANUFACTURE ELEVATOR AS PER DRAWING

CHANGE AS NOTED, REAPPROVAL REQUIRED
 MAKE CHANGES AS NOTED, SEND CORRECTED DRAWING FOR REAPPROVAL BEFORE MANUFACTURE

SIGNATURE: _____ DATE: _____

CAUTION: ONCE THE DRAWING IS APPROVED, JOB CANCELLATION FEES WILL BE 50% OF JOB PRICING

PROVIDED BY OTHERS

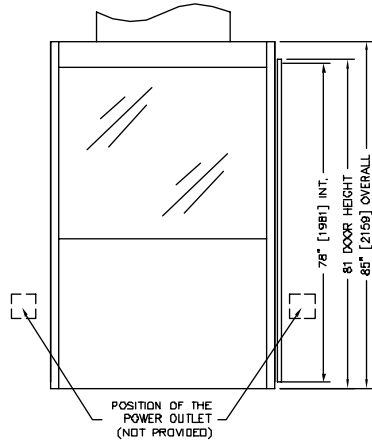
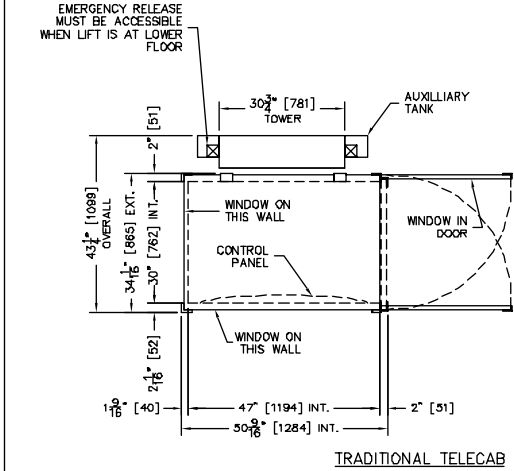
- 1) POWER SUPPLY: DEDICATED CIRCUIT, 120 VAC, 20 AMPS, SINGLE PHASE
- 2) CONSTRUCTION SITE: LOAD BEARING WALL AND FLOOR CUT OUT NEEDS TO SUPPORT THE LOADS SHOWN ON THE DRAWINGS. THE SOLIDITY OF THE CONSTRUCTION IS NOT THE RESPONSIBILITY OF SAVARIA INC. LOAD BEARING WALL TO INCLUDE TWO SETS OF THREE 2" X 4" WOOD STUDS 24" APART AS SHOWN ON THE FLOOR CUT-OUT DRAWING
- 3) DIMENSIONS: CONTRACTOR/CUSTOMER TO VERIFY ALL DIMENSIONS AND REPORT ANY DISCREPANCIES TO OUR OFFICE IMMEDIATELY.
- 4) PERMANENT POWER: BEFORE INSTALLATION CAN BEGIN, PERMANENT POWER MUST BE SUPPLIED.
- 5) A PHONE LINE TO CONNECT THE CAB PHONE

SAFETY FEATURES

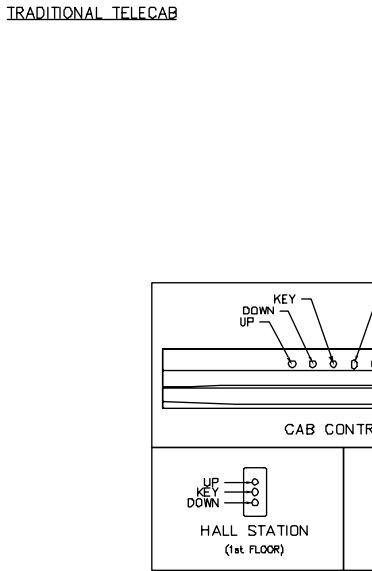
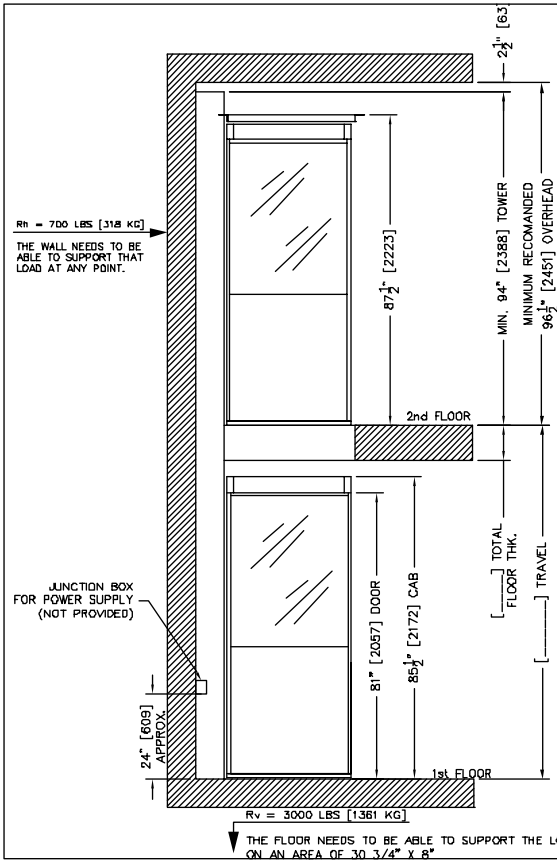
- 1) ELECTRO-MECHANICAL DOOR LOCK AND OPEN DOOR SENSOR
- 2) UNDER PANEL SAFETY SENSOR
- 3) EMERGENCY STOP AND ALARM
- 4) EMERGENCY BATTERY LOWERING
- 5) EMERGENCY LOWERING
- 6) FULLY ENCLOSED DRIVE TOWER
- 7) PRESSURE RELIEF VALVE TO PREVENT PLATFORM OVERLOAD
- 8) SLACK CHAIN SAFETY DEVICE
- 9) TELEPHONE IN CAB
- 10) HALOGEN LIGHT IN CAB
- 11) NEGATIVE PRESSURE SWITCH

CODE
 THIS LIFT IS DESIGNED, MANUFACTURED AND INSTALLED IN ACCORDANCE WITH THE FOLLOWING STANDARDS :
 ASME A17.1 PART V 1998-97, NEC 2002 AND IBC 2000.
 SAVARIA'S RESPONSIBILITY IS LIMITED TO THE DESIGN AND MANUFACTURING REQUIREMENTS OF THESE CODES AND EXCLUDES REQUIREMENTS RELEVANT TO THE INSTALLATION AND INSTALLATION SITE.

| | |
|-------------------------|---|
| CLASSIFICATION | RESIDENTIAL BUILDING |
| TELECAB TYPE | TYPE III, TRADITIONAL |
| TELECAB USABLE DIM. | 30" x 47" x 78" |
| TELECAB CAPACITY | 500 LBS [227 KG] |
| COLOR (URETHANE FINISH) | <input type="checkbox"/> WHITE <input type="checkbox"/> BIDE |
| PLEXIGLASS TINT | <input type="checkbox"/> BRONZE <input type="checkbox"/> CLEAR |
| RATED SPEED | <input type="checkbox"/> 20 FT/MIN <input type="checkbox"/> 14 FT/MIN |
| LEVEL SERVED | <input type="checkbox"/> 2 LEVELS <input type="checkbox"/> 3 LEVELS |
| NUMBER OF OPENING(S) | <input type="checkbox"/> 1 OPENING <input type="checkbox"/> 2 OPENINGS |
| DRIVE SYSTEM | 1 TO 2 CHAIN HYDRAULIC |
| CAB DOOR OPERATION | <input type="checkbox"/> MANUAL <input type="checkbox"/> HYDRAULIC DOOR CLOSER <input type="checkbox"/> POWER OPERATED |
| PLUNGER DIAMETER | <input type="checkbox"/> 1 1/2" <input type="checkbox"/> 2" |
| PLUNGER WALL THICK. | FULL |
| CASING DIAMETER | <input type="checkbox"/> 2" <input type="checkbox"/> 2 1/2" |
| CASING WALL THICK. | 1/8" |
| CYLINDER CLOSE LENGTH | 80 1/2" |
| WEIGHT/PLUNGER | 2125 LBS [864 KG] |
| SYSTEM MAX. PRESSURE | 2000 PSI |
| OIL CAPACITY | <input type="checkbox"/> 1.25 GAL/US <input type="checkbox"/> 3.00 GAL/US |
| MOTOR | 1.5 HP, 115 V |
| CHAIN | #50, QTY: 2 |
| CONTROLLER | RELAY LOGIC |
| POWER OPERATION | <input type="checkbox"/> 110 VAC ± 12 VDC DOWN STD <input type="checkbox"/> 12 VDC UP + DOWN <input type="checkbox"/> 220 VAC/50 HZ |
| OPERATION | CONSTANT PRESSURE, ANTI-CREEP FEATURE |
| HALL STATION | <input type="checkbox"/> SURFACE MOUNTED <input type="checkbox"/> RECESS MOUNTED |
| BEARING WALL | <input type="checkbox"/> WOOD <input type="checkbox"/> CONCRETE <input type="checkbox"/> OTHER: _____ |
| FLOOR PLS. | <input type="checkbox"/> REQUIRED <input type="checkbox"/> NOT REQUIRED |
| UNDER PAN | <input type="checkbox"/> REQUIRED <input type="checkbox"/> NOT REQUIRED |



| | | | | | |
|--------------|-----------------------------|-----------------------------------|-------------------------------------|----|------|
| FOR APPROVAL | | REV. | DESCRIPTION | BY | DATE |
| CUSTOMER : | | | | | |
| PROJECT : | | | | | |
| DATE : | | | | | |
| PROJECTION | TOLERANCES IF NOT SPECIFIED | | | | |
| NTS | FRAC: 1/8" [3] | | | | |
| DATE: | DRAWN BY: | SERVICES INDUSTRIELS SAVARIA INC. | | | |
| DRAWING # | REV# | PAGE: | MODEL: TELECAB RESIDENTIAL ELEVATOR | | |
| | 1/4 | | TITLE: TYPE III - PLAN VIEW | | |



DRAWING APPROVAL:
 THIS DRAWING REFLECTS OUR INTERPRETATION OF THE INFORMATION PROVIDED BY THE DEALER ON THE TELECAB ORDER FORM. THIS INFORMATION IS THE DEALER'S RESPONSIBILITY, AND IS THE BASIS FROM WHICH THE TELECAB ELEVATOR IS DESIGNED AND MANUFACTURED. PLEASE INDICATE THE REQUESTED ACTION BY CHECKING ONE OF THE FOLLOWING BOXES AND SIGNING BELOW TO AUTHORIZE COMPLETION OF THIS ORDER.

APPROVED WITH NO EXCEPTIONS
 MANUFACTURE ELEVATOR AS PER DRAWING

CHANGE AS NOTED, REAPPROVAL REQUIRED
 MAKE CHANGES AS NOTED, SEND CORRECTED DRAWING FOR REAPPROVAL BEFORE MANUFACTURE

SIGNATURE: _____ DATE: _____

CAUTION: ONCE THE DRAWING IS APPROVED, JOB CANCELLATION FEES WILL BE 50% OF JOB PRICING

| | | | | | |
|--------------|-----------------------------|-----------------------------------|-------------------------------------|----|------|
| FOR APPROVAL | | REV. | DESCRIPTION | BY | DATE |
| CUSTOMER : | | | | | |
| PROJECT : | | | | | |
| DATE : | | | | | |
| PROJECTION | TOLERANCES IF NOT SPECIFIED | | | | |
| NTS | FRAC: 1/8" [3] | | | | |
| DATE: | DRAWN BY: | SERVICES INDUSTRIELS SAVARIA INC. | | | |
| DRAWING # | REV# | PAGE: | MODEL: TELECAB RESIDENTIAL ELEVATOR | | |
| | 2/4 | | TITLE: TYPE III - PLAN ELEVATION | | |

Figure 13: Floor cut-out – Type III right access, 30" x 47"

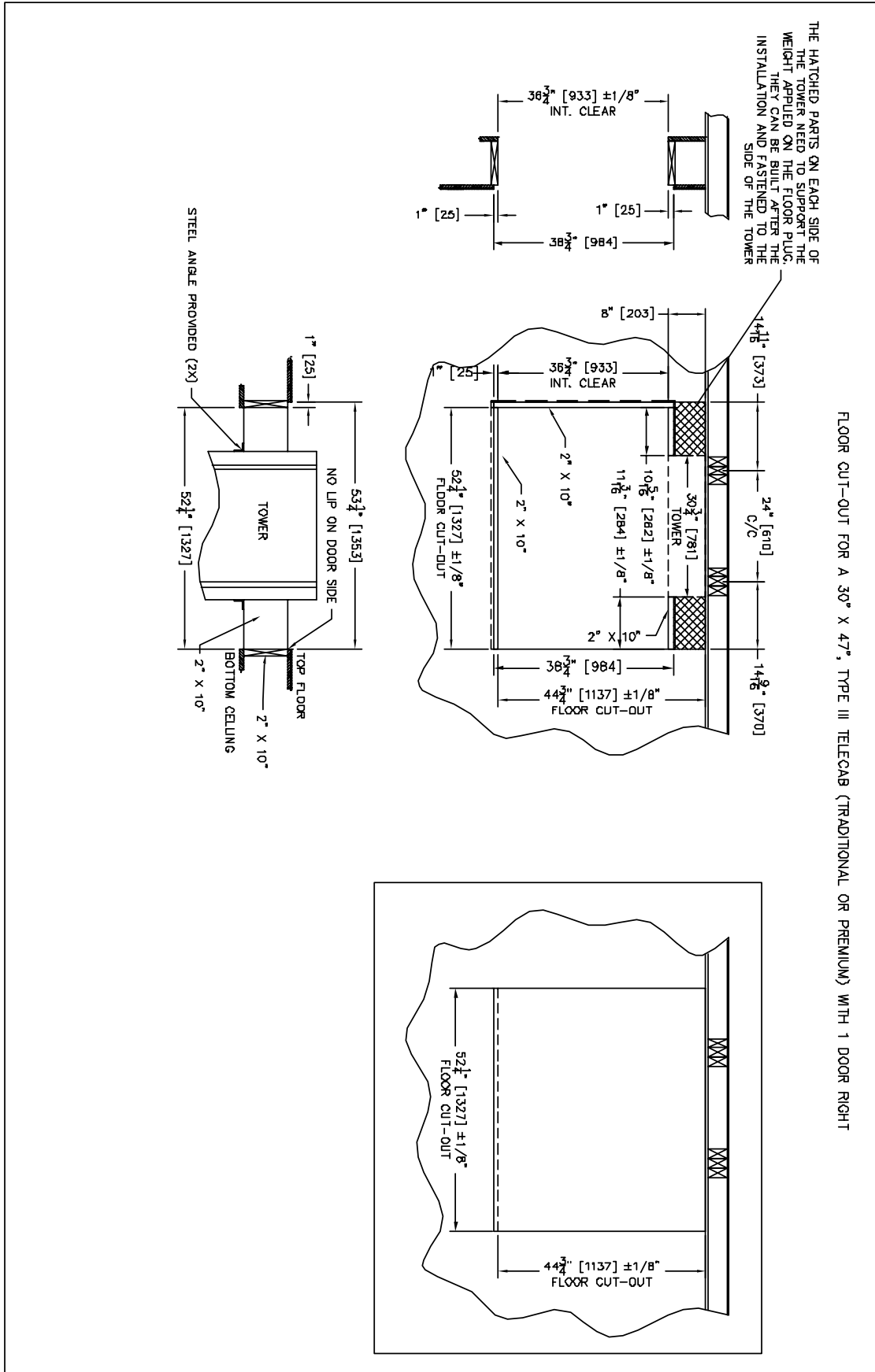


Figure 14: Plan and elevation views – Type III left/right access, 30" x 47"

DRAWING APPROVAL:
THIS DRAWING REFLECTS OUR INTERPRETATION OF THE INFORMATION PROVIDED BY THE DEALER ON THE TELECAB ORDER FORM. THIS INFORMATION IS THE DEALER'S RESPONSIBILITY, AND IS THE BASIS FROM WHICH THE TELECAB ELEVATOR IS DESIGNED AND MANUFACTURED. PLEASE INDICATE THE REQUESTED ACTION BY CHECKING ONE OF THE FOLLOWING BOXES AND SIGNING BELOW TO AUTHORIZE COMPLETION OF THIS ORDER.

APPROVED WITH NO EXCEPTIONS
MANUFACTURE ELEVATOR AS PER DRAWING

CHANGE AS NOTED, REAPPROVAL REQUIRED
MAKE CHANGES AS NOTED, SEND CORRECTED DRAWING FOR REAPPROVAL BEFORE MANUFACTURE

SIGNATURE: _____ DATE: _____

CAUTION: ONCE THE DRAWING IS APPROVED, JOB CANCELLATION FEES WILL BE 50% OF JOB PRICING

PROVIDED BY OTHERS

- 1) POWER SUPPLY: DEDICATED CIRCUIT, 120 VAC, 20 AMPS, SINGLE PHASE
- 2) CONSTRUCTION SITE: LOAD BEARING WALL AND FLOOR CUT OUT NEEDS TO SUPPORT THE LOADS SHOWN ON THE DRAWINGS. THE SOLIDITY OF THE CONSTRUCTION IS NOT THE RESPONSIBILITY OF SAVARIA INC. LOAD BEARING WALL TO INCLUDE TWO SETS OF THREE 2" X 4" WOOD STUDS 24" APART AS SHOWN ON THE FLOOR CUT-OUT DRAWING
- 3) DIMENSIONS: CONTRACTOR/CUSTOMER TO VERIFY ALL DIMENSIONS AND REPORT ANY DISCREPANCIES TO OUR OFFICE IMMEDIATELY.
- 4) PERMANENT POWER: BEFORE INSTALLATION CAN BEGIN, PERMANENT POWER MUST BE SUPPLIED.
- 5) A PHONE LINE TO CONNECT THE CAB PHONE

SAFETY FEATURES

- 1) ELECTRO-MECHANICAL DOOR LOCK AND OPEN DOOR SENSOR
- 2) UNDER PANEL SAFETY SENSOR
- 3) EMERGENCY STOP AND ALARM
- 4) EMERGENCY BATTERY LOWERING
- 5) EMERGENCY LOWERING
- 6) FULLY ENCLOSED DRIVE TOWER
- 7) PRESSURE RELIEF VALVE TO PREVENT PLATFORM OVERLOAD
- 8) SLACK CHAIN SAFETY DEVICE
- 9) TELEPHONE IN CAB
- 10) HALOGEN LIGHT IN CAB
- 11) NEGATIVE PRESSURE SWITCH

CODE

THIS LIFT IS DESIGNED, MANUFACTURED AND INSTALLED IN ACCORDANCE WITH THE FOLLOWING STANDARDS :
ASME A17.1 PART V 1988-97, NEC 2002 AND IBC 2000.
SAVARIA'S RESPONSIBILITY IS LIMITED TO THE DESIGN AND MANUFACTURING REQUIREMENTS OF THESE CODES AND EXCLUDES REQUIREMENTS RELEVANT TO THE INSTALLATION AND INSTALLATION SITE.

| | |
|-------------------------|---|
| CLASSIFICATION | RESIDENTIAL BUILDING |
| TELECAB TYPE | TYPE III, TRADITIONAL |
| TELECAB USABLE DIM. | 30" x 47" x 78" |
| TELECAB CAPACITY | 500 LBS [227 KG] |
| COLOR (URETHANE FINISH) | <input type="checkbox"/> WHITE <input type="checkbox"/> BEIGE |
| PLEXIGLASS TINT | <input type="checkbox"/> BRONZE <input type="checkbox"/> CLEAR |
| RATED SPEED | <input type="checkbox"/> 20 FT/MIN <input type="checkbox"/> 14 FT/MIN |
| LEVEL SERVED | <input type="checkbox"/> 2 LEVELS <input type="checkbox"/> 3 LEVELS |
| NUMBER OF OPENING(S) | <input type="checkbox"/> 1 OPENING <input type="checkbox"/> 2 OPENINGS |
| DRIVE SYSTEM | 1 TO 2 CHAIN HYDRAULIC |
| CAB DOOR OPERATION | <input type="checkbox"/> MANUAL <input type="checkbox"/> HYDRAULIC DOOR CLOSER <input type="checkbox"/> POWER OPERATED |
| PLUNGER DIAMETER | <input type="checkbox"/> 1 1/2" <input type="checkbox"/> 2" |
| PLUNGER WALL THK. | FULL |
| CASING DIAMETER | <input type="checkbox"/> 2" <input type="checkbox"/> 2 1/2" |
| CASING WALL THK. | 1/8" |
| CYLINDER CLOSE LENGTH | |
| WEIGHT/PLUNGER | 2125 LBS [864 KG] |
| SYSTEM MAX. PRESSURE | 2000 PSI |
| OIL CAPACITY | <input type="checkbox"/> 1.25 GAL/US <input type="checkbox"/> 3.00 GAL/US |
| MOTOR | 1.5 HP, 115 V |
| CHAIN #50, QTY: 2 | |
| CONTROLLER | RELAY LOGIC |
| POWER OPERATION | <input type="checkbox"/> 110 VAC + 12 VDC DOWN STD <input type="checkbox"/> 12 VDC UP + DOWN <input type="checkbox"/> 220 VAC/50 HZ |
| OPERATION | CONSTANT PRESSURE, ANTI-CREEP FEATURE |
| HALL STATION | <input type="checkbox"/> SURFACE MOUNTED <input type="checkbox"/> RECESS MOUNTED |
| BEARING WALL | <input type="checkbox"/> WOOD <input type="checkbox"/> CONCRETE |
| FLOOR PLUG | <input type="checkbox"/> REQUIRED <input type="checkbox"/> NOT REQUIRED |
| UNDER PAN | <input type="checkbox"/> REQUIRED <input type="checkbox"/> NOT REQUIRED |

TRADITIONAL TELECAB

POSITION OF THE POWER OUTLET (NOT PROVIDED)

| FOR APPROVAL | | |
|--|-------------|-------------------------------------|
| REV. | DESCRIPTION | BY DATE |
| CUSTOMER : | | |
| PROJECT : | | |
| DATE : | | |
| TOLERANCES IF NOT SPECIFIED FRAC: ±1/8" [3] | | |
| SCALE: NTS | DRAWN BY: | SERVICES INDUSTRIELS SAVARIA INC. |
| DATE: | | |
| DRAWING # | REV# | MODEL: TELECAB RESIDENTIAL ELEVATOR |
| | PAGE: 1/4 | TITLE: TYPE III - PLAN VIEW |

DRAWING APPROVAL:
THIS DRAWING REFLECTS OUR INTERPRETATION OF THE INFORMATION PROVIDED BY THE DEALER ON THE TELECAB ORDER FORM. THIS INFORMATION IS THE DEALER'S RESPONSIBILITY, AND IS THE BASIS FROM WHICH THE TELECAB ELEVATOR IS DESIGNED AND MANUFACTURED. PLEASE INDICATE THE REQUESTED ACTION BY CHECKING ONE OF THE FOLLOWING BOXES AND SIGNING BELOW TO AUTHORIZE COMPLETION OF THIS ORDER.

APPROVED WITH NO EXCEPTIONS
MANUFACTURE ELEVATOR AS PER DRAWING

CHANGE AS NOTED, REAPPROVAL REQUIRED
MAKE CHANGES AS NOTED, SEND CORRECTED DRAWING FOR REAPPROVAL BEFORE MANUFACTURE

SIGNATURE: _____ DATE: _____

CAUTION: ONCE THE DRAWING IS APPROVED, JOB CANCELLATION FEES WILL BE 50% OF JOB PRICING

TRADITIONAL TELECAB

Rh = 700 LBS [318 KG]
THE WALL NEEDS TO BE ABLE TO SUPPORT THAT LOAD AT ANY POINT.

Rv = 3000 LBS [1361 KG]
THE FLOOR NEEDS TO BE ABLE TO SUPPORT THE LOAD SHOWN ON AN AREA OF 30 3/4" x 8"

CAB CONTROL

HALL STATION (1st FLOOR) HALL STATION (2nd FLOOR)

| FOR APPROVAL | | |
|--|-------------|-------------------------------------|
| REV. | DESCRIPTION | BY DATE |
| CUSTOMER : | | |
| PROJECT : | | |
| DATE : | | |
| TOLERANCES IF NOT SPECIFIED FRAC: ±1/8" [3] | | |
| SCALE: NTS | DRAWN BY: | SERVICES INDUSTRIELS SAVARIA INC. |
| DATE: | | |
| DRAWING # | REV# | MODEL: TELECAB RESIDENTIAL ELEVATOR |
| | PAGE: 2/4 | TITLE: TYPE III - PLAN ELEVATION |

Figure 15: Floor cut-out – Type III left/right access, 30" x 47"

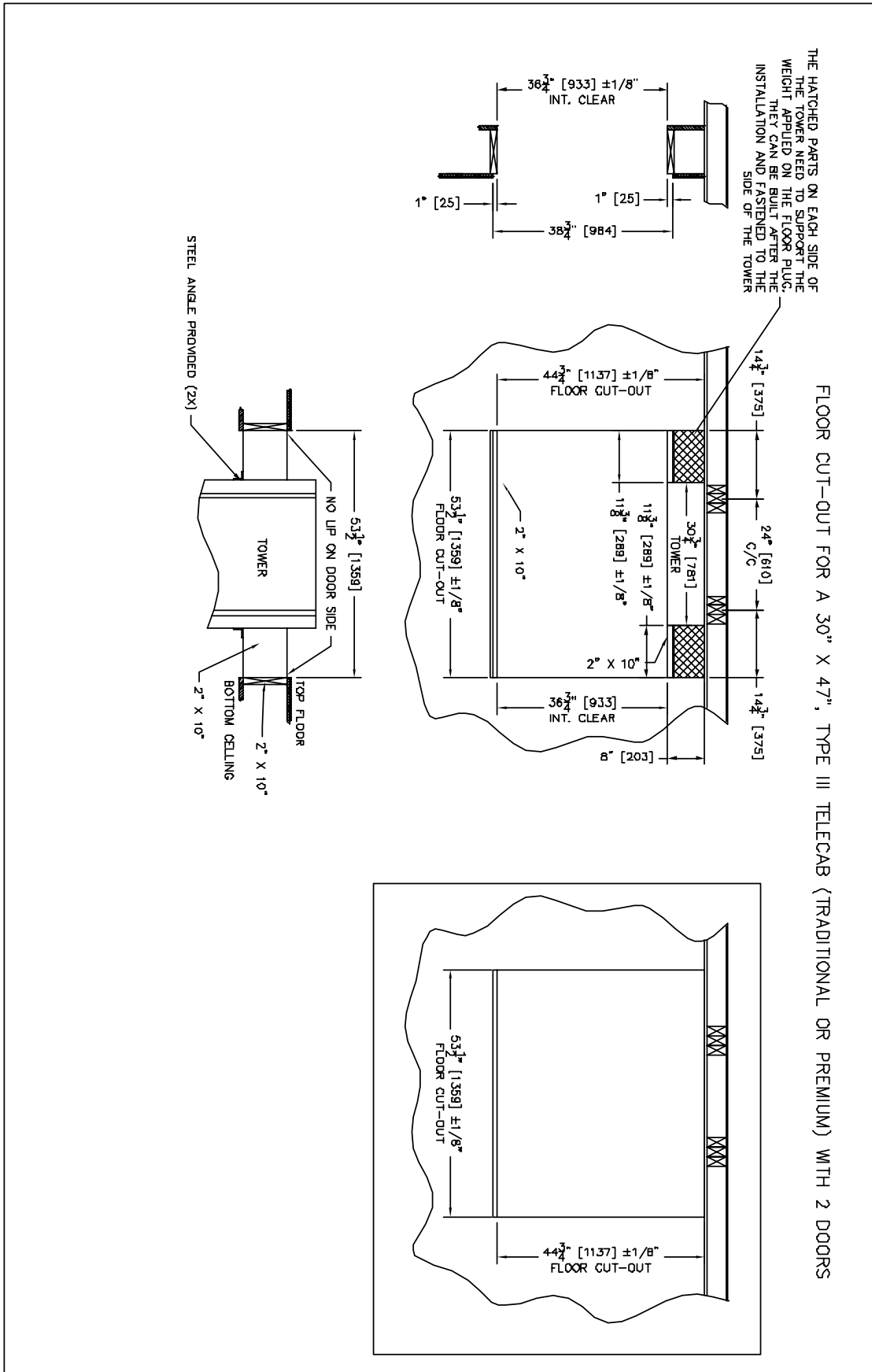


Figure 16: Plan and elevation views – Type IV left access, 32" x 54"

DRAWING APPROVAL:
THIS DRAWING REFLECTS OUR INTERPRETATION OF THE INFORMATION PROVIDED BY THE DEALER ON THE TELECAB ORDER FORM. THIS INFORMATION IS THE DEALER'S RESPONSIBILITY, AND IS THE BASIS FROM WHICH THE TELECAB ELEVATOR IS DESIGNED AND MANUFACTURED. PLEASE INDICATE THE REQUESTED ACTION BY CHECKING ONE OF THE FOLLOWING BOXES AND SIGNING BELOW TO AUTHORIZE COMPLETION OF THIS ORDER.

APPROVED WITH NO EXCEPTIONS
MANUFACTURE ELEVATOR AS PER DRAWING

CHANGE AS NOTED, REAPPROVAL REQUIRED
MAKE CHANGES AS NOTED, SEND CORRECTED DRAWING FOR REAPPROVAL BEFORE MANUFACTURE.

SIGNATURE: _____ DATE: _____

CAUTION: ONCE THE DRAWING IS APPROVED, JOB CANCELLATION FEES WILL BE 50% OF JOB PRICING

PROVIDED BY OTHERS

- 1) POWER SUPPLY: DEDICATED CIRCUIT, 120 VAC, 20 AMPS, SINGLE PHASE
- 2) CONSTRUCTION SITE: LOAD BEARING WALL AND FLOOR CUT OUT NEEDS TO SUPPORT THE LOADS SHOWN ON THE DRAWINGS. THE SOLIDITY OF THE CONSTRUCTION IS NOT THE RESPONSIBILITY OF SAVARIA INC. LOAD BEARING WALL TO INCLUDE TWO SETS OF THREE 2" X 4" WOOD STUDS 24" APART AS SHOWN ON THE FLOOR CUT-OUT DRAWING
- 3) DIMENSIONS: CONTRACTOR/CUSTOMER TO VERIFY ALL DIMENSIONS AND REPORT ANY DISCREPANCIES TO OUR OFFICE IMMEDIATELY.
- 4) PERMANENT POWER: BEFORE INSTALLATION CAN BEGIN, PERMANENT POWER MUST BE SUPPLIED.
- 5) A PHONE LINE TO CONNECT THE CAB PHONE

SAFETY FEATURES

- 1) ELECTRO-MECHANICAL DOOR LOCK AND OPEN DOOR SENSOR
- 2) LINGER PANEL SAFETY SENSOR
- 3) EMERGENCY STOP AND ALARM
- 4) EMERGENCY BATTERY LOWERING
- 5) EMERGENCY LOWERING
- 6) FULLY ENCLOSED DRIVE TOWER
- 7) PRESSURE RELIEF VALVE TO PREVENT PLATFORM OVERLOAD
- 8) SLACK CHAIN SAFETY DEVICE
- 9) TELEPHONE IN CAB
- 10) HALOGEN LIGHT IN CAB
- 11) NEGATIVE PRESSURE SWITCH

CODE

THIS LIFT IS DESIGNED, MANUFACTURED AND INSTALLED IN ACCORDANCE WITH THE FOLLOWING STANDARDS :
ASME A17.1 PART 1 1986-97, NEC 2002 AND IBC 2003.
SAVARIA'S RESPONSIBILITY IS LIMITED TO THE DESIGN AND MANUFACTURING REQUIREMENTS OF THESE CODES AND EXCLUDES REQUIREMENTS RELEVANT TO THE INSTALLATION AND INSTALLATION SITE.

| | |
|-------------------------|---|
| CLASSIFICATION | RESIDENTIAL BUILDING |
| TELECAB TYPE | TYPE IV, TRADITIONAL |
| TELECAB USABLE DIM. | 32" X 54" X 78" |
| TELECAB CAPACITY | 500 LBS [227 KG] |
| COLOR (URETHANE FINISH) | <input type="checkbox"/> WHITE <input type="checkbox"/> BEIGE |
| PLEXIGLASS TINT | <input type="checkbox"/> BRONZE <input type="checkbox"/> CLEAR |
| RATED SPEED | <input type="checkbox"/> 20 FT/MIN <input type="checkbox"/> 14 FT/MIN |
| LEVEL SERVED | <input type="checkbox"/> 2 LEVELS <input type="checkbox"/> 3 LEVELS |
| NUMBER OF OPENING(S) | <input type="checkbox"/> 1 OPENING <input type="checkbox"/> 2 OPENINGS |
| DRIVE SYSTEM | 1 TO 2 CHAIN HYDRAULIC |
| CAB DOOR OPERATION | <input type="checkbox"/> MANUAL <input type="checkbox"/> HYDRAULIC DOOR CLOSER <input type="checkbox"/> POWER OPERATED |
| PLUNGER DIAMETER | <input type="checkbox"/> 1 1/2" <input type="checkbox"/> 2" |
| PLUNGER WALL THK. | FULL |
| CASING DIAMETER | <input type="checkbox"/> 2" <input type="checkbox"/> 2 1/2" |
| CASING WALL THK. | 1/8" |
| CYLINDER CLOSE LENGTH | |
| HEIGHT/PLUNGER | 2125 LBS [964 KG] |
| SYSTEM MAX. PRESSURE | 2000 PSI |
| OIL CAPACITY | <input type="checkbox"/> 1.25 GAL/US <input type="checkbox"/> 3.00 GAL/US |
| MOTOR | 1.5 HP, 115 V |
| CHAIN | #50, QTY: 2 |
| CONTROLLER | RELAY LOGIC |
| POWER OPERATION | <input type="checkbox"/> 110 VAC + 12 VDC DOWN STD <input type="checkbox"/> 12 VDC UP + DOWN <input type="checkbox"/> 220 VAC/60 HZ |
| OPERATION | CONSTANT PRESSURE, ANTI-CREEP FEATURE |
| HALL STATION | <input type="checkbox"/> SURFACE MOUNTED <input type="checkbox"/> RECESS MOUNTED |
| BEARING WALL | <input type="checkbox"/> WOOD <input type="checkbox"/> CONCRETE |
| | <input type="checkbox"/> OTHER _____ |
| FLOOR PLUG | <input type="checkbox"/> REQUIRED <input type="checkbox"/> NOT REQUIRED |
| UNDER PAN | <input type="checkbox"/> REQUIRED <input type="checkbox"/> NOT REQUIRED |

EMERGENCY RELEASE MUST BE ACCESSIBLE WHEN LIFT IS AT LOWER FLOOR

30 3/8" [781] TOWER

AUXILIARY TANK

2" [51]

WINDOW ON THIS WALL

WINDOW ON THIS WALL

CONTROL PANEL

WINDOW IN DOOR

32" [813] INT. [916] EXT.

46 1/2" [1149] OVERALL

36 1/8" [916]

2" [51]

54" [1372] INT.

57 3/8" [1462] EXT.

1 9/16" [40]

TRADITIONAL TELECAB

88" [2156] OVERALL

81" DOOR HEIGHT

78" [1981] INT.

POSITION OF THE POWER OUTLET (NOT PROVIDED)

TRADITIONAL TELECAB

Rh = 700 LBS [318 KG]

THE WALL NEEDS TO BE ABLE TO SUPPORT THAT LOAD AT ANY POINT.

24" [609] APPROX.

JUNCTION BOX FOR POWER SUPPLY (NOT PROVIDED)

81" [2057] DOOR

85 1/2" [2172] CAB

MIN. 84" [2388] TOWER

MINIMUM RECOMMENDED 96 1/2" [2445] OVERHEAD

2nd FLOOR

1st FLOOR

TOTAL FLOOR THK. TRAVEL

Rv = 3000 LBS [1361 KG]

THE FLOOR NEEDS TO BE ABLE TO SUPPORT THE LOAD SHOWN ON AN AREA OF 30 3/4" X 8"

DRAWING APPROVAL:
THIS DRAWING REFLECTS OUR INTERPRETATION OF THE INFORMATION PROVIDED BY THE DEALER ON THE TELECAB ORDER FORM. THIS INFORMATION IS THE DEALER'S RESPONSIBILITY, AND IS THE BASIS FROM WHICH THE TELECAB ELEVATOR IS DESIGNED AND MANUFACTURED. PLEASE INDICATE THE REQUESTED ACTION BY CHECKING ONE OF THE FOLLOWING BOXES AND SIGNING BELOW TO AUTHORIZE COMPLETION OF THIS ORDER.

APPROVED WITH NO EXCEPTIONS
MANUFACTURE ELEVATOR AS PER DRAWING

CHANGE AS NOTED, REAPPROVAL REQUIRED
MAKE CHANGES AS NOTED, SEND CORRECTED DRAWING FOR REAPPROVAL BEFORE MANUFACTURE.

SIGNATURE: _____ DATE: _____

CAUTION: ONCE THE DRAWING IS APPROVED, JOB CANCELLATION FEES WILL BE 50% OF JOB PRICING

KEY DOWN UP

EMERGENCY STOP

BELL LIGHT

CAB CONTROL

KEY UP DOWN

HALL STATION (1st FLOOR)

KEY UP DOWN

HALL STATION (2nd FLOOR)

| | | | |
|--------------|-----------------------------|-----------------------------------|--------------------------|
| FOR APPROVAL | | BY | DATE |
| REV. | DESCRIPTION | | |
| CUSTOMER : | | | |
| PROJECT : | | | |
| DATE : | | | |
| PROJECTION | TOLERANCES IF NOT SPECIFIED | | |
| | FRAC: ±1/8" [3] | | |
| SCALE: | DRAWN BY: | SERVICES INDUSTRIELS SAVARIA INC. | |
| DATE: | | | |
| DRAWING # | REV# | PAGE: | TITLE: |
| | | 1/4 | TYPE IV - PLAN ELEVATION |

Figure 17: Floor cut-out – Type IV left access, 32" x 54"

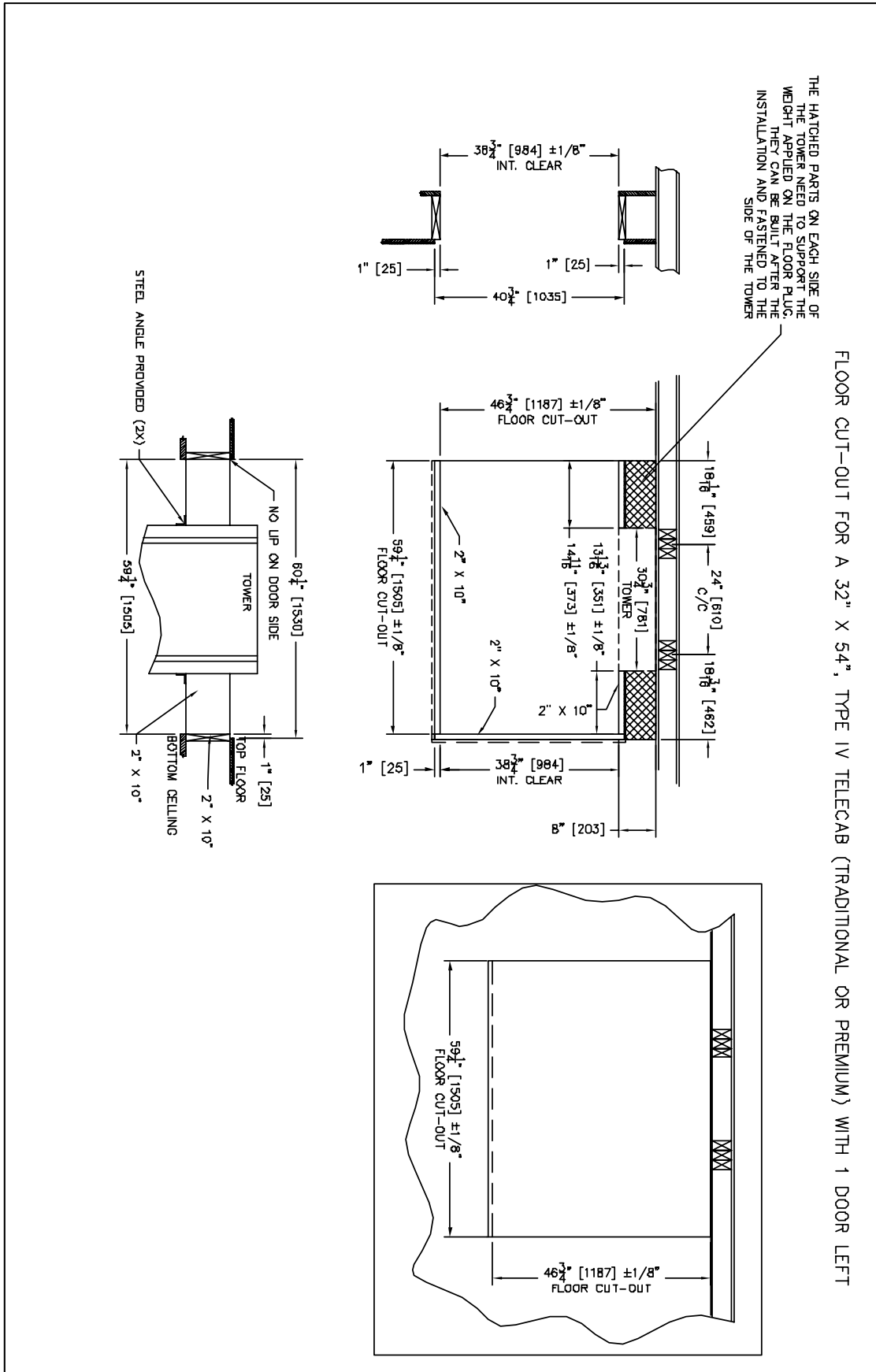


Figure 18: Plan and elevation views – Type IV right access, 32" x 54"

DRAWING APPROVAL:
THIS DRAWING REFLECTS OUR INTERPRETATION OF THE INFORMATION PROVIDED BY THE DEALER ON THE TELECAB ORDER FORM. THIS INFORMATION IS THE DEALER'S RESPONSIBILITY, AND IS THE BASIS FROM WHICH THE TELECAB ELEVATOR IS DESIGNED AND MANUFACTURED. PLEASE INDICATE THE REQUESTED ACTION BY CHECKING ONE OF THE FOLLOWING BOXES AND SIGNING BELOW TO AUTHORIZE COMPLETION OF THIS ORDER.

APPROVED WITH NO EXCEPTIONS
MANUFACTURE ELEVATOR AS PER DRAWING

CHANGE AS NOTED, REAPPROVAL REQUIRED
MAKE CHANGES AS NOTED, SEND CORRECTED DRAWING FOR REAPPROVAL BEFORE MANUFACTURE

SIGNATURE: _____ DATE: _____

CAUTION: ONCE THE DRAWING IS APPROVED, JOB CANCELLATION FEES WILL BE 50% OF JOB PRICING

PROVIDED BY OTHERS

- 1) POWER SUPPLY, DEDICATED CIRCUIT, 120 VAC, 20 AMPS, SINGLE PHASE
- 2) CONSTRUCTION SITE, LOAD BEARING WALL AND FLOOR CUT OUT NEEDS TO SUPPORT THE LOADS SHOWN ON THE DRAWINGS. THE SOLIDITY OF THE CONSTRUCTION IS NOT THE RESPONSIBILITY OF SAVARIA INC. LOAD BEARING WALL TO INCLUDE TWO SETS OF THREE 2" X 4" WOOD STUDS 24" APART AS SHOWN ON THE FLOOR CUT-OUT DRAWING
- 3) DIMENSIONS: CONTRACTOR/CUSTOMER TO VERIFY ALL DIMENSIONS AND REPORT ANY DISCREPANCIES TO OUR OFFICE IMMEDIATELY.
- 4) PERMANENT POWER: BEFORE INSTALLATION CAN BEGIN, PERMANENT POWER MUST BE SUPPLIED.
- 5) A PHONE LINE TO CONNECT THE CAB PHONE

SAFETY FEATURES

- 1) ELECTRO-MECHANICAL DOOR LOCK AND OPEN DOOR SENSOR
- 2) UNDER PANEL SAFETY SENSOR
- 3) EMERGENCY STOP AND ALARM
- 4) EMERGENCY BATTERY LOWERING
- 5) EMERGENCY LOWERING
- 6) FULLY ENCLOSED DRIVE TOWER
- 7) PRESSURE RELIEF VALVE TO PREVENT PLATFORM OVERLOAD
- 8) SLACK CHAIN SAFETY DEVICE
- 9) TELEPHONE IN CAB
- 10) HALOGEN LIGHT IN CAB
- 11) NEGATIVE PRESSURE SWITCH

CODE
THIS LIFT IS DESIGNED, MANUFACTURED AND INSTALLED IN ACCORDANCE WITH THE FOLLOWING STANDARDS :
ASME A17.1 PART 1 1986-97, NEC 2002 AND IBC 2003.
SAVARIA'S RESPONSIBILITY IS LIMITED TO THE DESIGN AND MANUFACTURING REQUIREMENTS OF THESE CODES AND EXCLUDES REQUIREMENTS RELEVANT TO THE INSTALLATION AND INSTALLATION SITE.

| | |
|-------------------------|---|
| CLASSIFICATION | RESIDENTIAL BUILDING |
| TELECAB TYPE | TYPE IV, TRADITIONAL |
| TELECAB USABLE DIM. | 32" x 54" x 78" |
| TELECAB CAPACITY | 500 LBS [227 KG] |
| COLOR (URETHANE FINISH) | <input type="checkbox"/> WHITE <input type="checkbox"/> BEIGE |
| PLEXIGLASS TINT | <input type="checkbox"/> BRONZE <input type="checkbox"/> CLEAR |
| RATED SPEED | <input type="checkbox"/> 20 FT/MIN <input type="checkbox"/> 14 FT/MIN |
| LEVEL SERVED | <input type="checkbox"/> 2 LEVELS <input type="checkbox"/> 3 LEVELS |
| NUMBER OF OPENING(S) | <input type="checkbox"/> 1 OPENING <input type="checkbox"/> 2 OPENINGS |
| DRIVE SYSTEM | 1 TO 2 CHAIN HYDRAULIC |
| CAB DOOR OPERATION | <input type="checkbox"/> MANUAL <input type="checkbox"/> HYDRAULIC DOOR CLOSER <input type="checkbox"/> POWER OPERATED |
| PLUNGER DIAMETER | <input type="checkbox"/> 1 1/2" <input type="checkbox"/> 2" |
| PLUNGER WALL THK. | FULL |
| CASING DIAMETER | <input type="checkbox"/> 2" <input type="checkbox"/> 2 1/2" |
| CASINO WALL THK. | 1/8" |
| CYLINDER CLOSE LENGTH | 66 1/2" |
| WEIGHT/PLUNGER | 2120 LBS [864 KG] |
| SYSTEM MAX. PRESSURE | 2000 PSI |
| OIL CAPACITY | <input type="checkbox"/> 1.25 GAL/US <input type="checkbox"/> 3.00 GAL/US |
| MOTOR | 1.5 HP, 115 V |
| CHAIN | #50, QTY: 2 |
| CONTROLLER | RELAY LOGIC |
| POWER OPERATION | <input type="checkbox"/> 110 VAC + 12 VDC DOWN STD <input type="checkbox"/> 12 VDC UP + DOWN <input type="checkbox"/> 220 VAC/50 HZ |
| OPERATION | CONSTANT PRESSURE, ANTI-CREEP FEATURE |
| HALL STATION | <input type="checkbox"/> SURFACE MOUNTED <input type="checkbox"/> RECESS MOUNTED |
| BEARING WALL | <input type="checkbox"/> WOOD <input type="checkbox"/> CONCRETE |
| FLOOR PLUG | <input type="checkbox"/> REQUIRED <input type="checkbox"/> NOT REQUIRED |
| UNDER PAN | <input type="checkbox"/> REQUIRED <input type="checkbox"/> NOT REQUIRED |

EMERGENCY RELEASE MUST BE ACCESSIBLE WHEN LIFT IS AT LOWER FLOOR

30 3/4" [781] TOWER

AUXILIARY TANK

WINDOW ON THIS WALL

CONTROL PANEL

WINDOW IN DOOR

WINDOW ON THIS WALL

45 3/4" [1148] OVERALL

36 1/8" [918] EXT.

32" [813] INT.

1 7/8" [48] APPROX.

54" [1372] INT.

2" [51]

57 3/8" [1463]

TRADITIONAL TELECAB

78" [1981] INT.

81" DOOR HEIGHT

65" [1651] OVERALL

POSITION OF THE POWER OUTLET (NOT PROVIDED)

| | | | |
|------------|-----------------------------|---|------|
| D | FOR APPROVAL | | |
| REV. | DESCRIPTION | BY | DATE |
| CUSTOMER : | | | |
| PROJECT : | | | |
| DATE : | | | |
| PROJECTION | TOLERANCES IF NOT SPECIFIED | DRAWN BY: SERVICES INDUSTRIELS SAVARIA INC. | |
| SCALE: NTS | FRAC: ±1/8" [3] | MODEL: TELECAB RESIDENTIAL ELEVATOR | |
| DATE: | | TITLE: TYPE IV - PLAN VIEW | |
| DRAWING # | REV: 0 | PAGE: 1/4 | |

DRAWING APPROVAL:
THIS DRAWING REFLECTS OUR INTERPRETATION OF THE INFORMATION PROVIDED BY THE DEALER ON THE TELECAB ORDER FORM. THIS INFORMATION IS THE DEALER'S RESPONSIBILITY, AND IS THE BASIS FROM WHICH THE TELECAB ELEVATOR IS DESIGNED AND MANUFACTURED. PLEASE INDICATE THE REQUESTED ACTION BY CHECKING ONE OF THE FOLLOWING BOXES AND SIGNING BELOW TO AUTHORIZE COMPLETION OF THIS ORDER.

APPROVED WITH NO EXCEPTIONS
MANUFACTURE ELEVATOR AS PER DRAWING

CHANGE AS NOTED, REAPPROVAL REQUIRED
MAKE CHANGES AS NOTED, SEND CORRECTED DRAWING FOR REAPPROVAL BEFORE MANUFACTURE

SIGNATURE: _____ DATE: _____

CAUTION: ONCE THE DRAWING IS APPROVED, JOB CANCELLATION FEES WILL BE 50% OF JOB PRICING

PROVIDED BY OTHERS

- 1) POWER SUPPLY, DEDICATED CIRCUIT, 120 VAC, 20 AMPS, SINGLE PHASE
- 2) CONSTRUCTION SITE, LOAD BEARING WALL AND FLOOR CUT OUT NEEDS TO SUPPORT THE LOADS SHOWN ON THE DRAWINGS. THE SOLIDITY OF THE CONSTRUCTION IS NOT THE RESPONSIBILITY OF SAVARIA INC. LOAD BEARING WALL TO INCLUDE TWO SETS OF THREE 2" X 4" WOOD STUDS 24" APART AS SHOWN ON THE FLOOR CUT-OUT DRAWING
- 3) DIMENSIONS: CONTRACTOR/CUSTOMER TO VERIFY ALL DIMENSIONS AND REPORT ANY DISCREPANCIES TO OUR OFFICE IMMEDIATELY.
- 4) PERMANENT POWER: BEFORE INSTALLATION CAN BEGIN, PERMANENT POWER MUST BE SUPPLIED.
- 5) A PHONE LINE TO CONNECT THE CAB PHONE

SAFETY FEATURES

- 1) ELECTRO-MECHANICAL DOOR LOCK AND OPEN DOOR SENSOR
- 2) UNDER PANEL SAFETY SENSOR
- 3) EMERGENCY STOP AND ALARM
- 4) EMERGENCY BATTERY LOWERING
- 5) EMERGENCY LOWERING
- 6) FULLY ENCLOSED DRIVE TOWER
- 7) PRESSURE RELIEF VALVE TO PREVENT PLATFORM OVERLOAD
- 8) SLACK CHAIN SAFETY DEVICE
- 9) TELEPHONE IN CAB
- 10) HALOGEN LIGHT IN CAB
- 11) NEGATIVE PRESSURE SWITCH

CODE
THIS LIFT IS DESIGNED, MANUFACTURED AND INSTALLED IN ACCORDANCE WITH THE FOLLOWING STANDARDS :
ASME A17.1 PART 1 1986-97, NEC 2002 AND IBC 2003.
SAVARIA'S RESPONSIBILITY IS LIMITED TO THE DESIGN AND MANUFACTURING REQUIREMENTS OF THESE CODES AND EXCLUDES REQUIREMENTS RELEVANT TO THE INSTALLATION AND INSTALLATION SITE.

| | |
|-------------------------|---|
| CLASSIFICATION | RESIDENTIAL BUILDING |
| TELECAB TYPE | TYPE IV, TRADITIONAL |
| TELECAB USABLE DIM. | 32" x 54" x 78" |
| TELECAB CAPACITY | 500 LBS [227 KG] |
| COLOR (URETHANE FINISH) | <input type="checkbox"/> WHITE <input type="checkbox"/> BEIGE |
| PLEXIGLASS TINT | <input type="checkbox"/> BRONZE <input type="checkbox"/> CLEAR |
| RATED SPEED | <input type="checkbox"/> 20 FT/MIN <input type="checkbox"/> 14 FT/MIN |
| LEVEL SERVED | <input type="checkbox"/> 2 LEVELS <input type="checkbox"/> 3 LEVELS |
| NUMBER OF OPENING(S) | <input type="checkbox"/> 1 OPENING <input type="checkbox"/> 2 OPENINGS |
| DRIVE SYSTEM | 1 TO 2 CHAIN HYDRAULIC |
| CAB DOOR OPERATION | <input type="checkbox"/> MANUAL <input type="checkbox"/> HYDRAULIC DOOR CLOSER <input type="checkbox"/> POWER OPERATED |
| PLUNGER DIAMETER | <input type="checkbox"/> 1 1/2" <input type="checkbox"/> 2" |
| PLUNGER WALL THK. | FULL |
| CASING DIAMETER | <input type="checkbox"/> 2" <input type="checkbox"/> 2 1/2" |
| CASINO WALL THK. | 1/8" |
| CYLINDER CLOSE LENGTH | 66 1/2" |
| WEIGHT/PLUNGER | 2120 LBS [864 KG] |
| SYSTEM MAX. PRESSURE | 2000 PSI |
| OIL CAPACITY | <input type="checkbox"/> 1.25 GAL/US <input type="checkbox"/> 3.00 GAL/US |
| MOTOR | 1.5 HP, 115 V |
| CHAIN | #50, QTY: 2 |
| CONTROLLER | RELAY LOGIC |
| POWER OPERATION | <input type="checkbox"/> 110 VAC + 12 VDC DOWN STD <input type="checkbox"/> 12 VDC UP + DOWN <input type="checkbox"/> 220 VAC/50 HZ |
| OPERATION | CONSTANT PRESSURE, ANTI-CREEP FEATURE |
| HALL STATION | <input type="checkbox"/> SURFACE MOUNTED <input type="checkbox"/> RECESS MOUNTED |
| BEARING WALL | <input type="checkbox"/> WOOD <input type="checkbox"/> CONCRETE |
| FLOOR PLUG | <input type="checkbox"/> REQUIRED <input type="checkbox"/> NOT REQUIRED |
| UNDER PAN | <input type="checkbox"/> REQUIRED <input type="checkbox"/> NOT REQUIRED |

Rh = 700 LBS [318 KG]

THE WALL NEEDS TO BE ABLE TO SUPPORT THAT LOAD AT ANY POINT.

24" [609] APPROX.

2 1/2" [63]

MIN. 94" [2388] TOWER

MINIMUM RECOMMENDED OVER-HEAD 96 1/2" [2461]

87 1/2" [2223]

2nd FLOOR

TOTAL FLOOR THK.

TRAVEL

81" [2057] DOOR

85 1/2" [2172] CAB

1st FLOOR

Rv = 3000 LBS [1361 KG]

THE FLOOR NEEDS TO BE ABLE TO SUPPORT THE LOAD SHOWN ON AN AREA OF 30 3/4" X 8"

JUNCTION BOX FOR POWER SUPPLY (NOT PROVIDED)

TRADITIONAL TELECAB

KEY DOWN

KEY UP

EMERGENCY STOP

BELL

LIGHT

CAB CONTROL

HALL STATION (1st FLOOR)

HALL STATION (2nd FLOOR)

| | | | |
|------------|-----------------------------|---|------|
| D | FOR APPROVAL | | |
| REV. | DESCRIPTION | BY | DATE |
| CUSTOMER : | | | |
| PROJECT : | | | |
| DATE : | | | |
| PROJECTION | TOLERANCES IF NOT SPECIFIED | DRAWN BY: SERVICES INDUSTRIELS SAVARIA INC. | |
| SCALE: NTS | FRAC: ±1/8" [3] | MODEL: TELECAB RESIDENTIAL ELEVATOR | |
| DATE: | | TITLE: TYPE IV - PLAN ELEVATION | |
| DRAWING # | REV: 0 | PAGE: 2/4 | |

Figure 19: Floor cut-out – Type IV right access, 32" x 54"

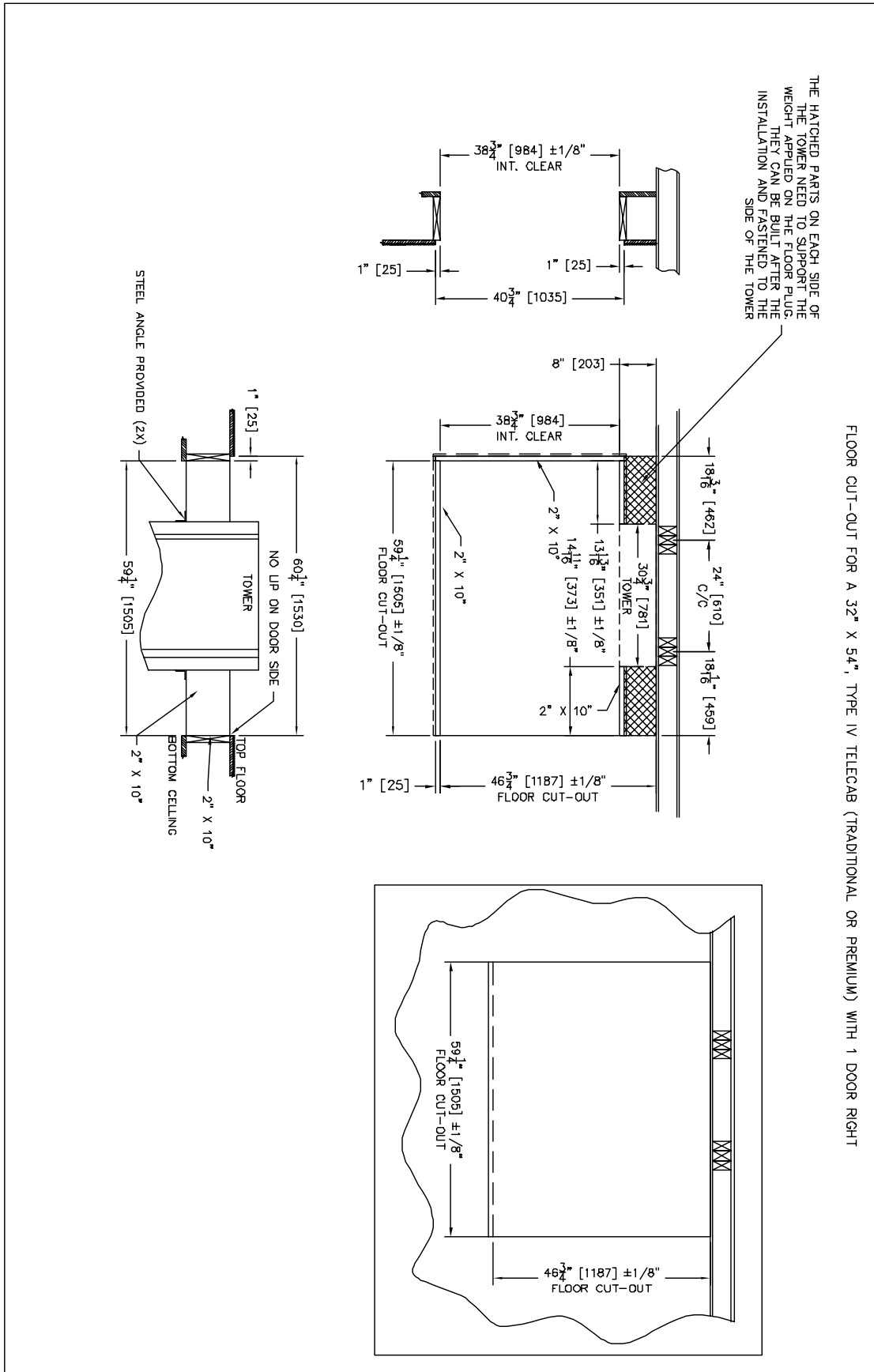


Figure 20: Plan and elevation views – Type IV left/right access, 32" x 54"

DRAWING APPROVAL:
THIS DRAWING REFLECTS OUR INTERPRETATION OF THE INFORMATION PROVIDED BY THE DEALER ON THE TELECAB ORDER FORM. THIS INFORMATION IS THE DEALER'S RESPONSIBILITY, AND IS THE BASIS FROM WHICH THE TELECAB ELEVATOR IS DESIGNED AND MANUFACTURED. PLEASE INDICATE THE REQUESTED ACTION BY CHECKING ONE OF THE FOLLOWING BOXES AND SIGNING BELOW TO AUTHORIZE COMPLETION OF THIS ORDER.

APPROVED WITH NO EXCEPTIONS
MANUFACTURE ELEVATOR AS PER DRAWING

CHANGE AS NOTED, REAPPROVAL REQUIRED
MAKE CHANGES AS NOTED, SEND CORRECTED DRAWING FOR REAPPROVAL BEFORE MANUFACTURE

SIGNATURE: _____ DATE: _____

CAUTION: ONCE THE DRAWING IS APPROVED, JOB CANCELLATION FEES WILL BE 50% OF JOB PRICING

PROVIDED BY OTHERS

- 1) POWER SUPPLY: DEDICATED CIRCUIT, 120 VAC, 20 AMPS, SINGLE PHASE
- 2) CONSTRUCTION SITE: LOAD BEARING WALL AND FLOOR CUT OUT NEEDS TO SUPPORT THE LOADS SHOWN ON THE DRAWINGS. THE SOLIDITY OF THE CONSTRUCTION IS NOT THE RESPONSIBILITY OF SAVARIA INC. LOAD BEARING WALL TO INCLUDE TWO SETS OF THREE 2" x 4" WOOD STUDS 24" APART AS SHOWN ON THE FLOOR CUT-OUT DRAWING
- 3) DIMENSIONS: CONTRACTOR/CUSTOMER TO VERIFY ALL DIMENSIONS AND REPORT ANY DISCREPANCIES TO OUR OFFICE IMMEDIATELY.
- 4) PERMANENT POWER: BEFORE INSTALLATION CAN BEGIN, PERMANENT POWER MUST BE SUPPLIED.
- 5) A PHONE LINE TO CONNECT THE CAB PHONE

SAFETY FEATURES

- 1) ELECTRO-MECHANICAL DOOR LOCK AND OPEN DOOR SENSOR
- 2) UNDER PANEL SAFETY SENSOR
- 3) EMERGENCY STOP AND ALARM
- 4) EMERGENCY BATTERY LOWERING
- 5) EMERGENCY LOWERING
- 6) FULLY ENCLOSED DRIVE TOWER
- 7) PRESSURE RELIEF VALVE TO PREVENT PLATFORM OVERLOAD
- 8) SLACK CHAIN SAFETY DEVICE
- 9) TELEPHONE IN CAB
- 10) HALOGEN LIGHT IN CAB
- 11) NEGATIVE PRESSURE SWITCH

CODE
THIS LIFT IS DESIGNED, MANUFACTURED AND INSTALLED IN ACCORDANCE WITH THE FOLLOWING STANDARDS :
ASME A17.1 PART V 1986-97, NEC 2002 AND IBC 2000.
SAVARIA'S RESPONSIBILITY IS LIMITED TO THE DESIGN AND MANUFACTURING REQUIREMENTS OF THESE CODES AND EXCLUDES REQUIREMENTS RELEVANT TO THE INSTALLATION AND INSTALLATION SITE.

CLASSIFICATION RESIDENTIAL BUILDING

TELECAB TYPE TYPE IV, TRADITIONAL

TELECAB USABLE DIM. 32" x 54" x 78"

TELECAB CAPACITY 500 LBS [227 KG]

COLOR (URETHANE FINISH) WHITE BEIGE
 PLEXIGLASS TINT BRONZE CLEAR

RATED SPEED 25 FT/MIN 14 FT/MIN

LEVEL SERVED 2 LEVELS 3 LEVELS

NUMBER OF OPENING(S) 1 OPENING 2 OPENINGS

DRIVE SYSTEM 1 TO 2 CHAIN HYDRAULIC

CAB DOOR OPERATION MANUAL HYDRAULIC DOOR CLOSER
 POWER OPERATED

PLUNGER DIAMETER 1 1/2" 2"

PLUMBER WALL THK. FULL

CASING DIAMETER 2" 2 1/2"

CASING WALL THK. 1/8"

CYLINDER CLOSE LENGTH _____

WEIGHT/PLUNGER 2125 LBS [864 KG]

SYSTEM MAX. PRESSURE 2000 PSI

OIL CAPACITY 1.25 GAL/US 3.00 GAL/US

MOTOR 1.5 HP, 115 V

CHAIN #60, QTY: 2

CONTROLLER RELAY LOGIC

POWER OPERATION 110 VAC ± 12 VDC DOWN STD
 12 VDC UP + DOWN
 220 VAC/60 HZ

OPERATION CONSTANT PRESSURE, ANTI-CREEP FEATURE

HALL STATION SURFACE MOUNTED RECESS MOUNTED

BEARING WALL WOOD CONCRETE

OTHER : _____

FLOOR PLUG REQUIRED NOT REQUIRED

UNDER PAN REQUIRED NOT REQUIRED

TRADITIONAL TELECAB

POSITION OF THE POWER OUTLET (NOT PROVIDED)

| | | | |
|------------|--|--|---------------------|
| D | FOR APPROVAL | | |
| REV. | DESCRIPTION | BY | DATE |
| CUSTOMER : | | | |
| PROJECT : | | | |
| DATE : | | | |
| PROJECTION | TOLERANCES IF NOT SPECIFIED FRAC: ±1/8" [3] | | |
| SCALE: | DRAWN BY: | SERVICES INDUSTRIELS SAVARIA INC. MODEL: TELECAB RESIDENTIAL ELEVATOR | |
| NTS | | | |
| DATE: | | | |
| DRAWING # | REV# | PAGE: | TITLE: |
| | 0 | 1/4 | TYPE IV - PLAN VIEW |

DRAWING APPROVAL:
THIS DRAWING REFLECTS OUR INTERPRETATION OF THE INFORMATION PROVIDED BY THE DEALER ON THE TELECAB ORDER FORM. THIS INFORMATION IS THE DEALER'S RESPONSIBILITY, AND IS THE BASIS FROM WHICH THE TELECAB ELEVATOR IS DESIGNED AND MANUFACTURED. PLEASE INDICATE THE REQUESTED ACTION BY CHECKING ONE OF THE FOLLOWING BOXES AND SIGNING BELOW TO AUTHORIZE COMPLETION OF THIS ORDER.

APPROVED WITH NO EXCEPTIONS
MANUFACTURE ELEVATOR AS PER DRAWING

CHANGE AS NOTED, REAPPROVAL REQUIRED
MAKE CHANGES AS NOTED, SEND CORRECTED DRAWING FOR REAPPROVAL BEFORE MANUFACTURE

SIGNATURE: _____ DATE: _____

CAUTION: ONCE THE DRAWING IS APPROVED, JOB CANCELLATION FEES WILL BE 50% OF JOB PRICING

PROVIDED BY OTHERS

- 1) POWER SUPPLY: DEDICATED CIRCUIT, 120 VAC, 20 AMPS, SINGLE PHASE
- 2) CONSTRUCTION SITE: LOAD BEARING WALL AND FLOOR CUT OUT NEEDS TO SUPPORT THE LOADS SHOWN ON THE DRAWINGS. THE SOLIDITY OF THE CONSTRUCTION IS NOT THE RESPONSIBILITY OF SAVARIA INC. LOAD BEARING WALL TO INCLUDE TWO SETS OF THREE 2" x 4" WOOD STUDS 24" APART AS SHOWN ON THE FLOOR CUT-OUT DRAWING
- 3) DIMENSIONS: CONTRACTOR/CUSTOMER TO VERIFY ALL DIMENSIONS AND REPORT ANY DISCREPANCIES TO OUR OFFICE IMMEDIATELY.
- 4) PERMANENT POWER: BEFORE INSTALLATION CAN BEGIN, PERMANENT POWER MUST BE SUPPLIED.
- 5) A PHONE LINE TO CONNECT THE CAB PHONE

SAFETY FEATURES

- 1) ELECTRO-MECHANICAL DOOR LOCK AND OPEN DOOR SENSOR
- 2) UNDER PANEL SAFETY SENSOR
- 3) EMERGENCY STOP AND ALARM
- 4) EMERGENCY BATTERY LOWERING
- 5) EMERGENCY LOWERING
- 6) FULLY ENCLOSED DRIVE TOWER
- 7) PRESSURE RELIEF VALVE TO PREVENT PLATFORM OVERLOAD
- 8) SLACK CHAIN SAFETY DEVICE
- 9) TELEPHONE IN CAB
- 10) HALOGEN LIGHT IN CAB
- 11) NEGATIVE PRESSURE SWITCH

CODE
THIS LIFT IS DESIGNED, MANUFACTURED AND INSTALLED IN ACCORDANCE WITH THE FOLLOWING STANDARDS :
ASME A17.1 PART V 1986-97, NEC 2002 AND IBC 2000.
SAVARIA'S RESPONSIBILITY IS LIMITED TO THE DESIGN AND MANUFACTURING REQUIREMENTS OF THESE CODES AND EXCLUDES REQUIREMENTS RELEVANT TO THE INSTALLATION AND INSTALLATION SITE.

CLASSIFICATION RESIDENTIAL BUILDING

TELECAB TYPE TYPE IV, TRADITIONAL

TELECAB USABLE DIM. 32" x 54" x 78"

TELECAB CAPACITY 500 LBS [227 KG]

COLOR (URETHANE FINISH) WHITE BEIGE
 PLEXIGLASS TINT BRONZE CLEAR

RATED SPEED 25 FT/MIN 14 FT/MIN

LEVEL SERVED 2 LEVELS 3 LEVELS

NUMBER OF OPENING(S) 1 OPENING 2 OPENINGS

DRIVE SYSTEM 1 TO 2 CHAIN HYDRAULIC

CAB DOOR OPERATION MANUAL HYDRAULIC DOOR CLOSER
 POWER OPERATED

PLUNGER DIAMETER 1 1/2" 2"

PLUMBER WALL THK. FULL

CASING DIAMETER 2" 2 1/2"

CASING WALL THK. 1/8"

CYLINDER CLOSE LENGTH _____

WEIGHT/PLUNGER 2125 LBS [864 KG]

SYSTEM MAX. PRESSURE 2000 PSI

OIL CAPACITY 1.25 GAL/US 3.00 GAL/US

MOTOR 1.5 HP, 115 V

CHAIN #60, QTY: 2

CONTROLLER RELAY LOGIC

POWER OPERATION 110 VAC ± 12 VDC DOWN STD
 12 VDC UP + DOWN
 220 VAC/60 HZ

OPERATION CONSTANT PRESSURE, ANTI-CREEP FEATURE

HALL STATION SURFACE MOUNTED RECESS MOUNTED

BEARING WALL WOOD CONCRETE

OTHER : _____

FLOOR PLUG REQUIRED NOT REQUIRED

UNDER PAN REQUIRED NOT REQUIRED

TRADITIONAL TELECAB

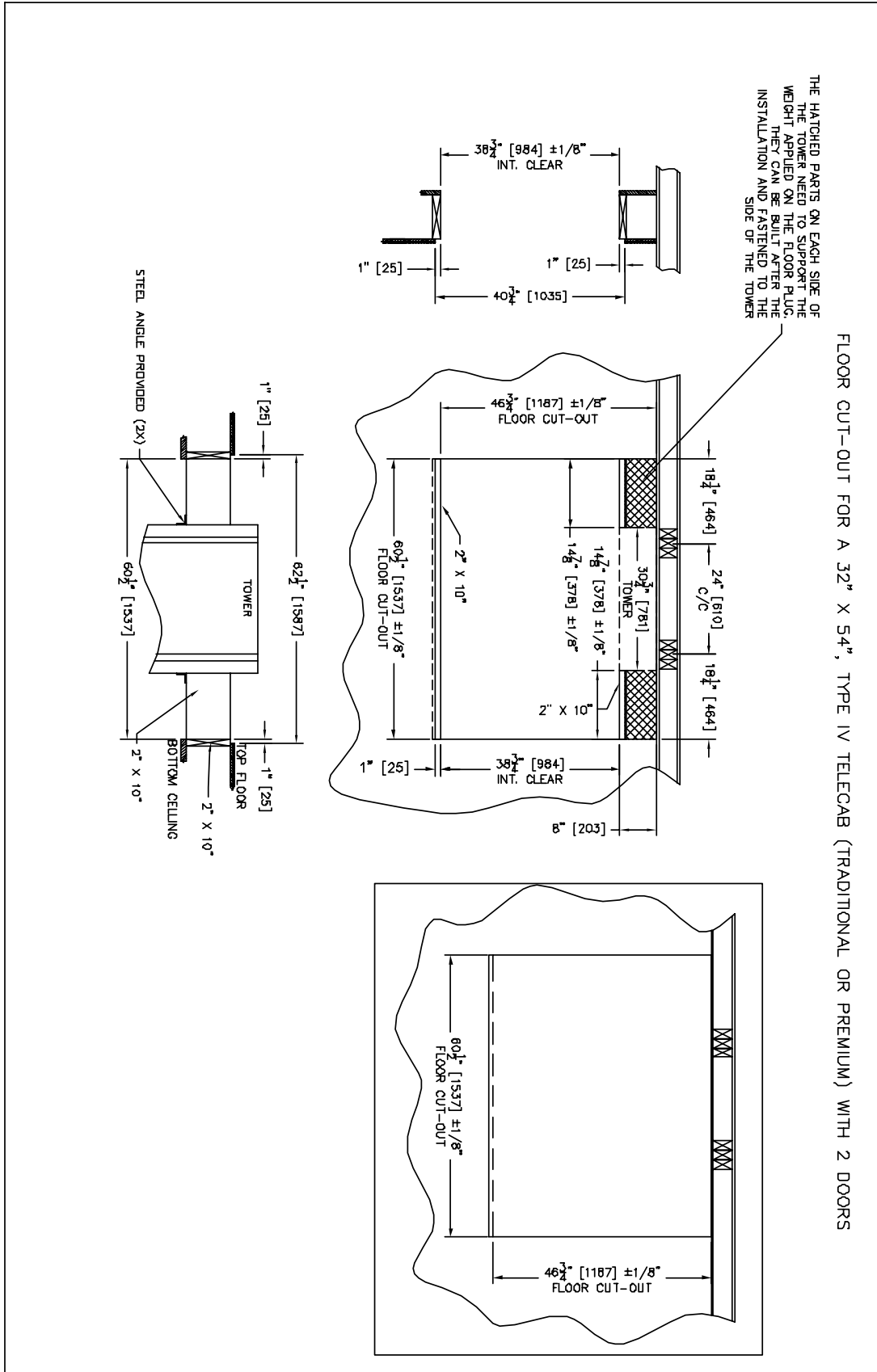
CAB CONTROL

HALL STATION (1st FLOOR)

HALL STATION (2nd FLOOR)

| | | | |
|------------|--|--|--------------------------|
| D | FOR APPROVAL | | |
| REV. | DESCRIPTION | BY | DATE |
| CUSTOMER : | | | |
| PROJECT : | | | |
| DATE : | | | |
| PROJECTION | TOLERANCES IF NOT SPECIFIED FRAC: ±1/8" [3] | | |
| SCALE: | DRAWN BY: | SERVICES INDUSTRIELS SAVARIA INC. MODEL: TELECAB RESIDENTIAL ELEVATOR | |
| NTS | | | |
| DATE: | | | |
| DRAWING # | REV# | PAGE: | TITLE: |
| | 0 | 2/4 | TYPE IV - PLAN ELEVATION |

Figure 21: Floor cut-out – Type IV left/right access, 32" x 54"



Architect Specifications

SECTION 14202 ELEVATORS AND LIFTS

PART 1 GENERAL

1.1 SECTION INCLUDES

- A. Residential elevators.

1.2 RELATED SECTIONS

- A. Division 16 Sections for electrical service for elevators to and including disconnect and fused switches at machine room.
- B. Division 16 Sections for standby power source, transfer switch, and connection from auxiliary contacts in transfer switch to controller.
- C. Division 16 Section "Voice and Data Communication Cabling" for telephone service to elevators.

1.3 REFERENCES

- A. American National Standards Institute (ANSI) B-29.2 - Chain Standards for Inverted Tooth (Silent) Chains and Sprockets.
- B. American Society of Mechanical Engineers (ASME) A17.1 - Safety Code for Elevators and Escalators.
- C. American Society of Mechanical Engineers (ASME) A18.1 - Safety Standard for Platform and Stairway Chair Lifts.
- D. U.S. Architectural & Transportation Barriers Compliance Board's "Americans with Disabilities Act (ADA), Accessibility Guidelines for Buildings and Facilities (ADAAG)".

1.4 REQUIREMENTS OF REGULATORY AGENCIES:

- A. Fabrication and installation work in compliance with applicable jurisdictional authorities.
- B. File shop drawings and submissions with local authorities as the information is made available. Company pre-inspection and jurisdictional authority inspections and permits are to be made on timely basis as required.

1.5 SUBMITTALS

- A. Submit under provisions of Section 01300.
- B. Product Data: Manufacturer's data sheets on each product to be used, including:
 1. Preparation instructions and recommendations.
 2. Storage and handling requirements and recommendations.
 3. Installation methods.
- C. Shop Drawings: Provide a complete layout of lift equipment detailing dimensions and clearances as required.
- D. Selection Samples: For each finish product specified requiring selection of color or finish, two complete sets of color charts representing manufacturer's full range of available colors and patterns.

1.6 QUALITY ASSURANCE

- A. Manufacturer Qualifications:
- B. Installer Qualifications:
 1. Execute work of this section only by a company that has adequate product liability insurance.
 2. Skilled tradesmen shall be employees of the installing contractor approved by the manufacturer, with demonstrated ability to perform the work on a timely basis.

1.7 DELIVERY, STORAGE, AND HANDLING

- A. Store products in manufacturer's unopened packaging until ready for installation.
- B. Store and dispose of solvent-based materials, and materials used with solvent-based materials, in accordance with requirements of local authorities having jurisdiction.

1.8 PROJECT CONDITIONS

- A. Maintain environmental conditions (temperature, humidity, and ventilation) within limits recommended by manufacturer for optimum results. Do not install systems under environmental conditions outside manufacturer's absolute limits.

1.9 WARRANTY

- A. Coverage - this warranty applies to the repair or replacement, at Manufacturer's option, of parts that fail due to defective material or workmanship. Manufacturer may, at its option, provide factory reconditioned parts. This warranty is provided to the Authorized Dealer on behalf of the final purchaser of the product and is not transferable. The Manufacturer's warranty does not cover labor charges for the removal, repair or replacement of warranty parts but such costs may be covered for a period of time by Authorized Dealer's warranty, which is provided to purchaser separately.
 1. The manufacturer shall offer a 36-month warranty on parts from date of substantial completion.

PART 2 PRODUCTS

2.1 MANUFACTURERS

- A. Acceptable Manufacturer: Savaria Concord Lifts Inc., which is located at: 107 Alfred Kuehne Blvd. ; Brampton, ON, Canada L6T 4K3; Toll Free Tel: 800-661-5112; Tel: 905-791-5555; Email: [request_info \(info@concordelevator.com\)](mailto:request_info(info@concordelevator.com);); Web: www.concord-elevator.com
- B. Requests for substitutions will be considered in accordance with provisions of Section 01600.

2.2 RESIDENTIAL ELEVATOR

- A. Residential Elevator: Savaria/Concord Telecab.
- B. Equipment: Provide equipment, incidental material and labor required for complete, operable hydraulic elevator installation. The elevators shall be erected, installed, adjusted, tested and placed in operation by the elevator system manufacturer or manufacturer's authorized installer.
- C. Performance: The elevator shall be designed and tested in accordance with ASME A17.1 part V. The testing shall consist of loading the platform to rated capacity for several cycles to insure proper operation. Mechanical failures and defects shall be corrected.
- D. Accessibility Requirements: Comply with Section 4.10 in the U.S. Architectural & Transportation Barriers Compliance Board's "Americans with Disabilities Act (ADA), Accessibility Guidelines for Buildings and Facilities (ADAAG)."
- E. The following preparatory work to receive the elevator specified shall be the work provided by others:
 - 1. Dedicated 110 VAC 20 amp single phase power to operate lift to be provided.
 - 2. No pit shall be provided.
 - 3. Provide a load-bearing wall to support a load of 700 lbs at any point.
 - 4. Provide a floor cut out. Refer to shop drawings.
 - 5. The floor needs to support 3000 lb (1362 kg).
 - 6. A phone line shall be provided.
- F. Characteristics:
 - 1. Rated load: 500 lb (227 kg).
 - 2. Rated Speed: 25 fpm. (0.07 m/s).
 - 3. Car Dimensions: 30 inches W by 46 inches L by 78 inches H (762 mm by 1168 mm by 1981 mm).
 - 4. Levels Serviced: 2.
 - 5. Car Access: Enter/exit same side.
 - 6. Maximum Travel: Up to 23 feet. Refer to drawings.
 - 7. Operations: Constant pressure.
 - 8. Power Supply: 110 VAC, 20 amps, 1 Phase.
 - 9. Drive System: 2 to 1 roller chain hydraulic.
 - 10. Paint: Powder coat finish.
 - 11. Color: Almond beige or white. Refer to Room Finish Schedule.
 - 12. Emergency Power: Battery operation in down direction.
 - 13. Controller: Electronic-free relay logic.
 - 14. Motor/Pump: 110VAC, 1.5HP/screw type.
 - 15. Car Operating Panel: Constant pressure buttons or rocker switches, emergency stop/alarm button, on/off key switch and emergency light, and a alarm button mounted on a removable steel panel.
 - 16. Hall Call Stations: Provide a surface-mounted Klockner Moeller box for upper and lower levels.
 - 17. Emergency Operation: The car shall be equipped with a battery-operated light fixture, emergency battery lowering device and alarm in case of normal building supply failure. The battery shall be the rechargeable type with an automatic recharging system. A manual lowering device shall be located in a lockable box at positioned at a designated landing.
 - 18. Manual lowering: Outside the hoistway at bottom landing.
- G. Car Enclosure:
 - 1. Walls: Durable metal wall panels.
 - 2. Ceilings: Durable metal (standard) with two (2) recessed down lights.
 - 3. Overhead lights in the car compartment shall turn ON automatically when the elevator door is opened and to stay on while the elevator is in use. The elevator lights will shut off by a timer when the elevator is not in use.
 - 4. Floor: Metal with non-skid surface.
 - 5. Handrail: Handrail located on control panel side.
- H. Systems and Components:
 - 1. The pumping unit and control shall be enclosed in the hoistway. The controller and pump unit shall be pre-wired and tested prior to shipment. Pump unit shall incorporate the following features:
 - a. Smooth stops at each landing shall be an inherent feature.
 - b. Adjustable pressure relief valve.
 - c. Manually operable down valve to lower lift in the event of an emergency. This valve shall be activated from outside of the hoistway through a keyed box.
 - d. Gate valve to isolate cylinder from pump unit.
 - e. Electrical solenoid for down direction control.
 - f. Emergency lowering by battery power, from the car control.
 - 2. The cylinder shall be constructed of steel pipe of sufficient thickness and suitable safety margin. The top of the cylinder shall be equipped with a cylinder head with an internal guide ring and self-adjusting packing.
 - 3. The plunger shall be constructed of a steel shaft of proper diameter machined true and smooth. The plunger shall be provided with a stop electrically welded to the bottom to prevent the plunger from leaving the cylinder.
 - 4. Roller Chains: Two (2) No.50 roller chains with 5/8 inch (16 mm) pitch. Minimum breaking strength 6100 lb (2772 kg) each.

5. Leveling Device: The lift shall be provided with an anti-creep device which will maintain the carriage level within 1/2 inch (13 mm) of the top landing.
 - a. All limit switches and leveling device switches shall be located in a position to be inaccessible to unauthorized persons. The switches shall be located behind the mast wall and be accessible through removable panels. Micro-switches shall not be used.
6. Guide Yoke: The 2:1 guide yoke/sprocket arrangements shall be supplied with two (2) sprockets, roller guide shoes, bearings and guards.
7. Terminal Stopping Device: Normal terminal stopping devices shall be provided at top and bottom of runway to stop the car positively and automatically. Limit switches shall be used. Micro-switches are not acceptable.
8. Guide Rail and Brackets: Steel 'C' guide rails and brackets shall be used to guide the platform and sling. Guide rails shall form part of the structural integrity of the unit and be integral to the mast enclosure, ensuring stability and minimum platform deflection when loaded.
9. Wiring and electrical connections shall comply with applicable codes. Insulated wiring shall have flame-retardant and moisture-proof outer covering and shall be run in conduit or electrical wireway if located outside the unit enclosure. Quick disconnect harnesses shall be used when possible.
10. The door locks shall be fire-rated electric door strike interlocked with operator.
11. The door shall be 78 inches H by 30 inches W (1981 mm by 762 mm) and shall be made of steel with Plexiglass insert.

PART 3 EXECUTION

3.1 EXAMINATION

- A. Do not begin installation until hoistway and machine room has been properly prepared.
- B. Site dimensions shall be taken to verify that tolerances and clearances have been maintained and meet local regulations.
- C. If substrate preparation is the responsibility of another installer, notify Architect of unsatisfactory preparation before proceeding.

3.2 PREPARATION

- A. Clean surfaces thoroughly prior to installation.
- B. Prepare surfaces using the methods recommended by the manufacturer for achieving the best result for the substrate under the project conditions.

3.3 ELEVATOR INSTALLATION

- A. Install in accordance with manufacturer's instructions.
- B. Install the components of the elevator system that are required and that are required by jurisdictional authorities to license the elevator.
- C. Trained employees of the elevator contractor shall perform installation work.
- D. Adjust elevator for proper operation and clean unit thoroughly.
- E. Instruct users in operating procedures and owner's maintenance person in trouble-shooting and maintenance procedures.

3.4 PROTECTION

- A. Protect installed products until completion of project.
- B. Touch-up, repair or replace damaged products before Substantial Completion.

END OF SECTION

Telecab Residential Elevator PLANNING GUIDE

Part No. 000698
Copyright © 2010

Savaria Corporation
Elevators and Lifts
www.savaria.com

Support
107 Alfred Kuehne Blvd.
Brampton, Ontario, L6T 4K3, Canada
Toll free: (800) 791-7999
Fax: (905) 791-2222

